

## Coralene Scarlet 2B-LS

A bright scarlet disperse dye with good sublimation fastness suitable for dyeing and printing applications on polyester

### Suitability / Application:

#### Substrate:

Fiber / Yarn	-	○
Sewing threads	-	●
Piece dyeing	-	●
Micro fibers / fabric	-	■
P/C Blends - Exhaust, 2 bath	-	●
P/C Blends - Continuous	-	■
P/Elastane Blends	-	■
P/W Blends	-	○

#### Process:

##### Exhaust dyeing:

Low temperature with carrier	-	○
Carrier dyeing at 110°C	-	○
HT, 130°C	-	●
HT, Alkaline dyeing (buffered at pH 9.5)	-	○

##### Continuous dyeing

-	-	●
---	---	---

##### Printing

-	-	●
---	---	---

##### Development method in printing:

Pressure Steaming	-	●
HT Loop Steaming	-	●

##### Discharge printing

-	-	●
---	---	---

Dischargeable ground	-	●
----------------------	---	---

Discharge resistant illuminant	-	○
--------------------------------	---	---

Exhaust Dyeing  
0.33% (1/3 SD)



1.00% (1/1 SD)



2.00% (2/1 SD)



(Dyeing at 130°C for 45 min on polyester fabric at pH 4 adjusted with Levocol 4398)

### General properties:

C.T.Z.:	100 - 130°C
Leveling at 130°C:	Good
Migration:	Moderate
pH range for application :	4.0 - 6.0
Dischargeability: (Zinc sulphonylate formaldehyde)	Good
Sensitivity to metal (Fe):	Low
Stripping method:	Reductive
Saturation value in HTHP exhaust dyeing: (On 80D/36F polyester knit fabric)	3.00%

#### Continuous dyeing

10.0g/l on P/C cloth



### Shade change under artificial light:

D 65	Inc A	F 11 (TL 84)	F02 (CWF)	UL 35
Control	YY	Y	GG	Y

### Cross staining on other components of blends in one bath dyeing:

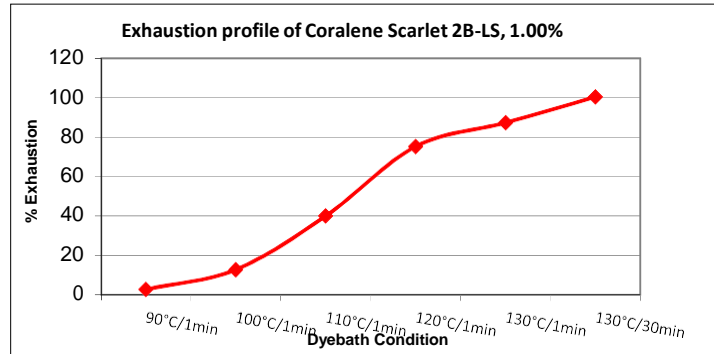
Substrate	CA	PAN	PA	Cellulosic	Wool
Staining in dyebath	High	Moderate	High	Moderate	High
Staining after R.C.	High	Moderate	High	Low	Low

( Abbreviation: ● - Suitable, ○ - Not Suitable, ◐ - Limited suitability, ■ - Not Recommended, R - Redder,

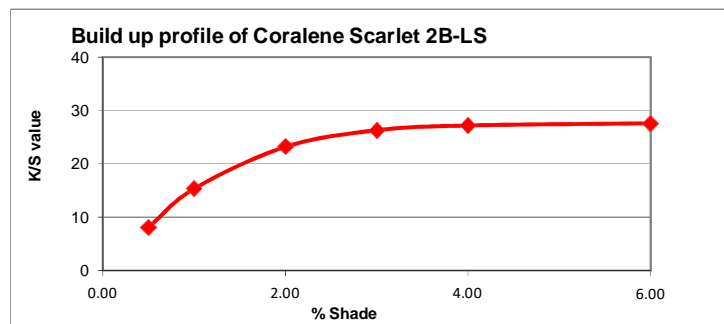
G - Greener, B - Bluer)

## Coralene Scarlet 2B-LS

### Product Performance:



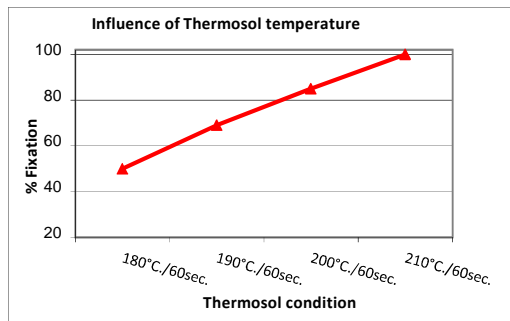
(Dyeing at different dye bath temperature on polyester fabric at pH 4 adjusted with Levocol 4398)



(Exhaust dyeing different depth at 130°C temperature for 45 min on polyester fabric at pH 4 adjusted with Levocol 4398)

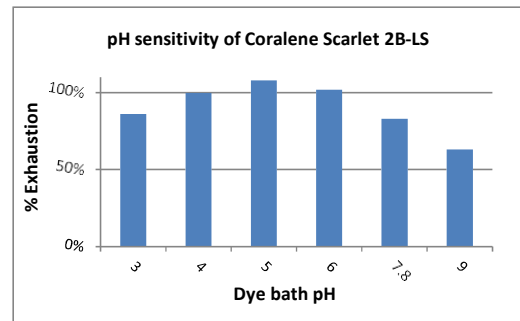
### Thermosol Application:

10.0 gpl Coralene Scarlet 2B-LS on P/C fabric



### pH Sensitivity:

1.00% Coralene Scarlet 2B-LS in exhaust dyeing



**Fastness Properties:** (Tested on 80D/36F 100% PET Knit dyed by exhaust method)

- Light fastness (ISO 105 B02)
- Light fastness (AATCC 16, Option 3, 20 AFU)
- Sublimation fastness 1/1 SD (ISO 105 P01, 30 Sec)

Shade change (Rating)		
1/6 SD	1/3 SD	1/1 SD
3-4	4	5
4.0	4.0	3.5

Temperature	180°C	190°C	200°C
C.O.S.	4-5	4-5	4-5
Staining on PET	4-5	4	3-4

## Coralene Scarlet 2B-LS

**Fastness Properties:** ( Tested at 1.00% depth, on 80D/36F 100% PET Knit dyed by exhaust method and post set at 180°C for 30 Sec)

		C.O.S.	Staining on					
			Acetate	Cotton	Nylon	Polyester	Acrylic	Wool
● Perspiration Light fastness (ISO 105 B07)	Acidic	4-5						
≡ Perspiration Light fastness (ISO 105 B07)	Alkaline	4-5						
● Wash fastness (ISO 105 C06, A2S, )		4	4	4-5	4	4-5	4-5	4-5
≡ Wash fastness (ISO 105 C06, C2S, )		4	3-4	4-5	3-4	4-5	4-5	4-5
● Wash fastness (ISO 105 C10 C, 60°C)		4	4	4-5	4-5	4-5	4-5	4-5
≡ Wash fastness (AATCC 61 Option 2A, 49°C)		4.0	3.0	4.0	3.0	4.0	4.5	4.0
● Dry cleaning fastness ( ISO 105 D01)		4	4-5	4-5	4-5	4-5	4-5	4-5
≡ Water fastness ( ISO 105 E01)		4-5	3-4	4	3-4	4	4-5	4-5
● Sea water fastness (ISO 105 E02)		4-5	3-4	4	3-4	4	4-5	4-5
≡ Chlorinated water (ISO 105 E03)	20 ppm	4						
● Chlorinated water (ISO 105 E03)	50 ppm	3-4						
≡ Perspiration fastness (ISO 105 E04)	Acidic	4-5	3-4	4	3-4	4	4-5	4-5
● Perspiration fastness (ISO 105 E04)	Alkaline	4-5	3-4	4	3-4	4	4-5	4-5
≡ Hypochlorite bleach fastness (ISO 105 N01)		4-5						
● Peroxide bleach fastness (ISO 105 N02)		4-5		3-4		4-5		
≡ Crocking fastness (ISO 105 X12, Dry/Wet)				4-5/4-5				
● PVC migration (ISO 105 X10)		3-4	(Staining on PVC film)					
≡ Saliva fastness (DIN 53160)		3-4	(Staining on filter paper)					

**Note:**

**Disclaimer:** This information is provided in good faith, to the best of our knowledge and without liabilities.



**Colourtex Industries Private Limited,**

91, Bhestan, Surat - 395023 (India)

Domestic: Tel.: +91 261 2897800/2897801

Export: Tel.: +91 261 2891427 /2897428

E mail: sales.surat@colourtex.co.in

E mail: ctx.export@colourtex.co.in