

Levaset Brown B

Short Profile

- Dark brown with excellent fastness to chlorine

Substrate Suitability :

Polyamide	S
Wool	S
Silk	S

General properties:

Solubility at 90°C	90
Dischargeability (Zn Sulfoxylate Formaldehyde)	3

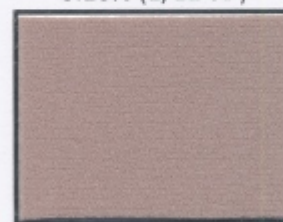
Shade change under article light:

D65	Inc A	F11 (TL 84)
Control	M. Redder/Bluer	M. Greener/Duller

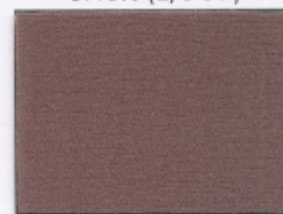
Cross staining on other components of blends in one bath dyeing :



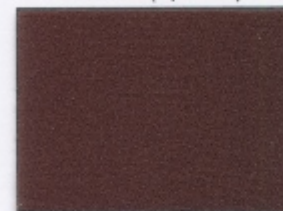
0.10% (1/12 SD)



0.40% (1/3 SD)

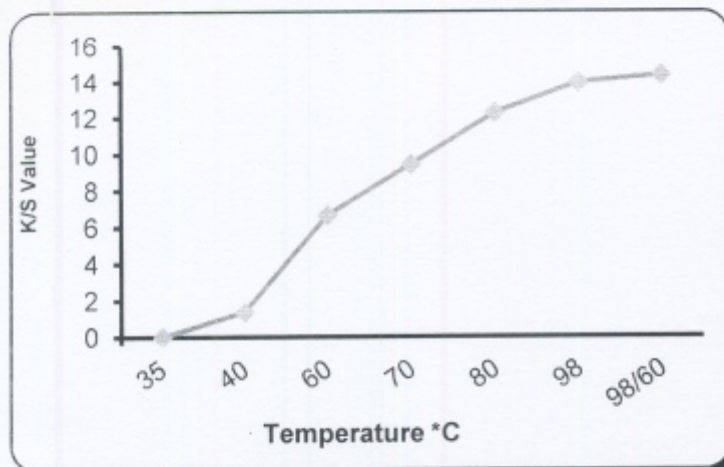


1.20% (1/1 SD)

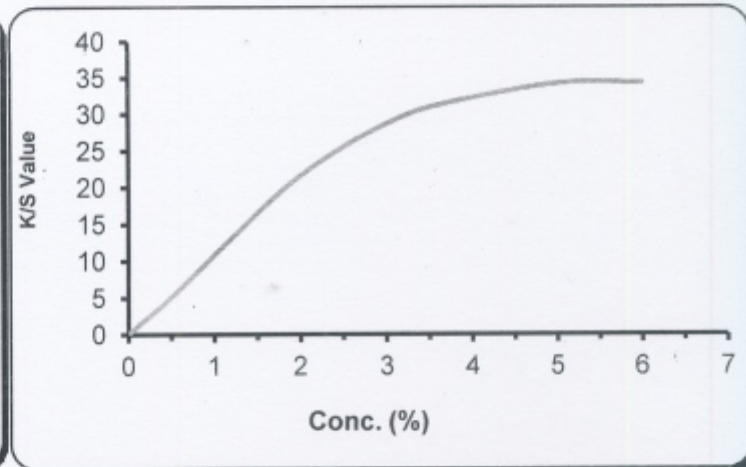


(Exhaust Dyeing on PA fabric at 98°C for 45 min pH 4-5 with Buffer System)

Exhaustion Fixation: (1/1 S/D)



Saturation Curve:



(This information is provided in good faith, to the best of our knowledge and without liability)

Fastness Properties Details

After Treatment					PA 6		PA 6,6						
Light Fastness Shade depth					1/12	1/3	1/1	1/12	1/3	1/1			
Light fastness (ISO 105 B02)- Up to grade 6					5	6	6+	4	5	6			
Light fastness (AATCC 16E) 20 AFU					5	5	5	5	5	5			
Light fastness (AATCC 16E) 40 AFU					4-5	4-5	5	4	4	4-5			
After Treatment					Without			With 2% Levacol NR					
Wet Fastness properties on 1/1 SD					CS	WO	PA	CO	CS	WO	PA	CO	
Wash fastness (ISO 105 C10 - B (50°C))					4	4	4	4-5	4	4	4-5	4-5	
Wash fastness (ISO 105 C10 - C (60°C))					4	4	3-4	4-5	4	4-5	4	4-5	
Wash fastness ((AATCC 61 Option 2A,49°C,))					4	4-5	3-4	4-5	4	4-5	4-5	5	
Water Sever (ISO 105 E01)					5	4-5	4-5	4-5	5	4-5	4-5	4-5	
Fastness to Sea Water (ISO 105 E02)					4-5	4	4-5	4	4-5	4	4-5	4-5	
Perspiration fastness (ISO 105 E04)					Acid	5	4-5	4-5	4-5	5	4	4-5	4-5
					Alkaline	4-5	4	4-5	4-5	4-5	4-5	4-5	
Fastness to Dry Cleaning (ISO 105 D01-1993)					4	4-5	4-5	4-5	4	4-5	4-5	4-5	

Crocking Fastness (ISO 105 X12)		Dry	5	Wet	4-5
Fastness to Chlorinated water (ISO 105 E03)		20ppm	4-5	50ppm	4

Stripping with recommended Recipe :

Heat up to 98°C & hold for 60 min, then rinse neutralisation with Acetic acid (pH 5.5) at Room Temp. followed by warm and cold wash.

Original Fabric	3 gpl Levacol CBSE 3 % Soda Ash	5 gpl Levacol ECO 4 pH Acetic Acid

(Levocol NR – 2.0% w.o.f + acetic acid – 4 pH at 70°C/20 min.)

Remarks:-

Abbreviation: S-Suitable, NS - Not Suitable

(CS = Change of Shade , SW = Staining on Wool , SP = Staining on Polyamide , SC = Staining on Cotton ,)

(This information is provided in good faith, to the best of our knowledge and without liability)