

Visit www.sozal.com.tr

Visit www.colourtex.com

SÖZAL

Disperse Dyes

Colourtex Ind. Ltd.

ISO 9001:2008

ISO 14001 / OHSAS 18001

ETAD member

- Coralene S Dyes are big molecule, high energy dyes. They can be used in all light-medium-dark colors.
- Suitable for printing, thermosol, yarn and beam dyeing methods.
- Suitable for exhaust and continuous systems
- High sublimation fastness

Coralene High Energy Dyes

SÖZAL

- Coralene Yellow SG H/C (Disp. Yellow 114)
- Coralene Yellow W6GS (Disp. Yellow 114)
- Coralene Yellow Brown 2RC H/C (Disp. Orange 30)
- Coralene Yellow Brown 2RLS %150 (Disp. Orange 30)
- Coralene Orange 3RLS (Disp. Orange 80)
- Coralene Scarlet GFL (Disp. Red 54)
- Coralene Rubine S2GL (Disp. Red 167)
- Coralene Rubine S2G %150 (Disp. Red 167.1)
- Coralene Rubine 2B-LS (Disp. Violet 33)
- Coralene Brilliant Blue GSL 400% (Disp. Blue 165)
- Coralene Blue SBGL (Disp. Blue 73)
- Coralene Brilliant Blue SR (Disp. Blue 354)
- Coralene Brilliant Blue CB conc
- Coralene Navy Blue 3G H/C (Disp. Blue 79)
- Coralene Navy Blue S2G %230 (Disp. Blue 79.1)
- Coralene Black RLS (Disp. Blue Mix)

Coralene SE -Medium Energy Dyes

SÖZAL

- Coralene Yellow 4GNLSE (Disp. Yellow 211)
- Coralene Scarlet GS H/C(Disp.Red 153)
- Coralene Scarlet 2BLS (Disp. Red 74)
- Coralene Red BEL (Disp. Red 92)
- Coralene Red F3BS-E (Disp. Red 343)
- Coralene Red 2BLS (Disp. Red 82)
- Coralene Rubin GFL (Disp. Red 73)
- Coralene Red Violet FBL 200% (Disp.Violet 26)
- Coralene Violet S3R (Disp.Violet 63)
- Coralene Briil.Blue DBR conc. (Disp. Blue 366)
- Coralene Blue 3R (Disp.Blue 183)
- Coralene Blue 2R conc. (Disp. Blue 183)
- Coralene Navy Blue EXSF (Disp. Blue Mix)
- Coralene Black 2RC conc (Disp. Black Mix)

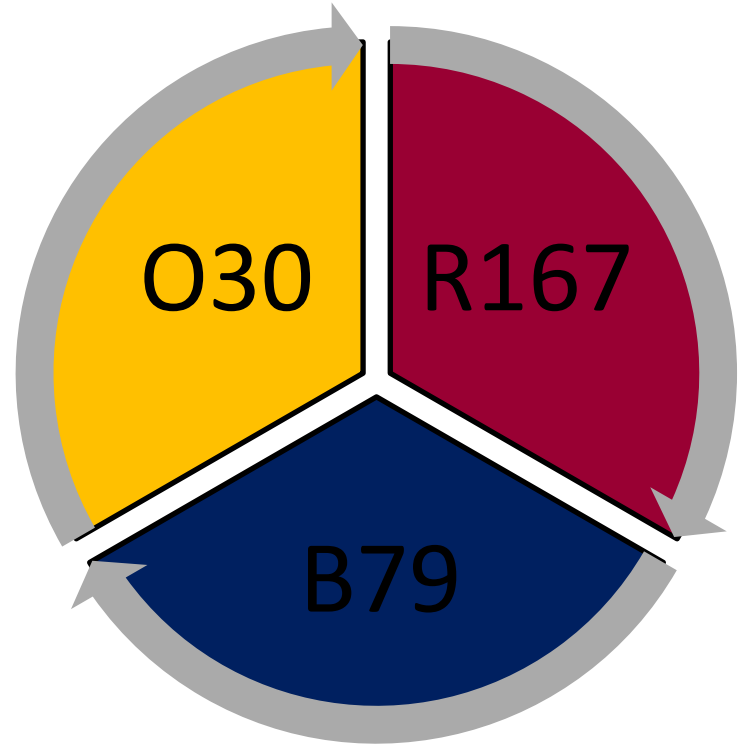
Coralene E-Low Energy Dyes

SÖZAL

- Coralene Red BF H/C (Disp. Red 60)
- Coralene Blue 2RL (Disp. Blue 56)

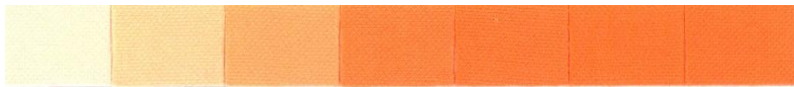
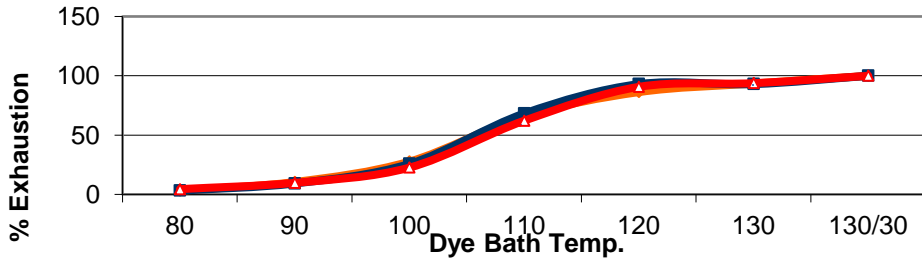
Coralene S

Coralene S Tricromie
Coralene Yellow Brown 2RC H/C
(Orange 30)
Coralene Rubin S2GL (Red 167)
Coralene Navy Blue 3G H/C (Blue 79)
For Blue ;
Recommendeted ;
Coralene Blue 2R conc (Blue 183).

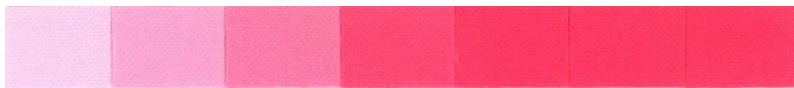


Fixation Curves

Exhaustion Profile of Trichromatic Components: 2



Coralene Yellow
Brown S2RFL



Coralene Rubine
S2GFL



Coralene Navy Blue
S2G

Coralene S gamut has a large molecule, the completion times in the fixation curves may be longer than other dyes. We have to make the dyeing time 60 minutes as it should be.

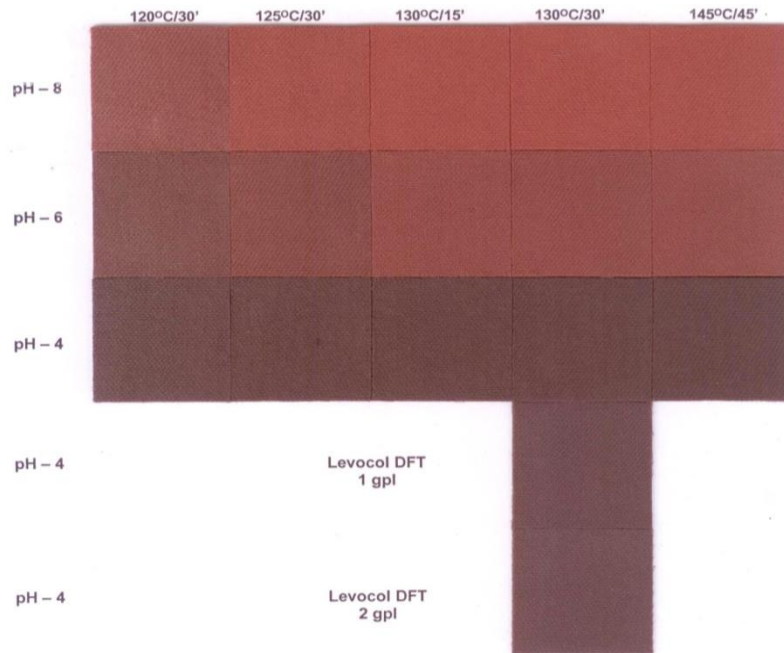
Coralene S

SÖZAL

ORANGE:30-0.75

RED 167:0.25

BLUE 79.1:0.25



You can also use the Coralene S range in light and critical colors by following some of the rules below. You should wait for 130 C- 60 minutes. You should check that the output pH replace 4.5-5.0. In low liquors, especially leveling agent communication is required according to the fabric weight.

- These dyes special dyes for washing fastness.
- These dyes have high washing fastness,high cross staining fastness
- These dyes don't stain lycra.
- Suitable continue and exhaust process.

Coralene HP-Coralene XF



- Coralene Golden Yellow HP-3R



- Coralene Yellow Brown XF-CT



- Coralene Brill Red HP-3BS



- Coralene Rubine XF-2G



- Coralene Rubine XF-YB



- Coralene Blue HP-GS



- Coralene Navy XF-CT



- Coralene Black XF-CT

- Coralene Black 2RC-Medium energy
- Coralene Black 2G-Medium energy
- Coralene Black RLS-Higy energy – highly sublimation fastness
- Coralene Black XFCT– highly washing fastness

Coralene MD

SÖZAL

Coralene MD dyes are compatible range of medium energy disperse dyes for exhaust and continuous dyeing of polyester and its blends with other fibers.

Coralene MD

SÖZAL

- Excellent Dyeing Characteristics
- Robust & Reproducible
- Wider Application Scope
- All Round Fastness
- Medium Energy Disperse Dyes

Tri Chromatic Combinations-Pale shades



➤ **Coralene Yellow MD**



➤ **Coralene Yellow Brown MD**



➤ **Coralene Rubine MD**



➤ **Coralene Royal Blue MD**

Tri Chromatic Combinations-Dark Shades



- **Coralene Yellowbrown MD**



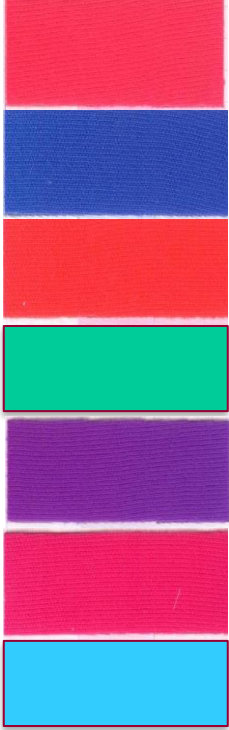
- **Coralene Rubine MD**



- **Coralene Navy MD**

Coralene MD

SÖZAL

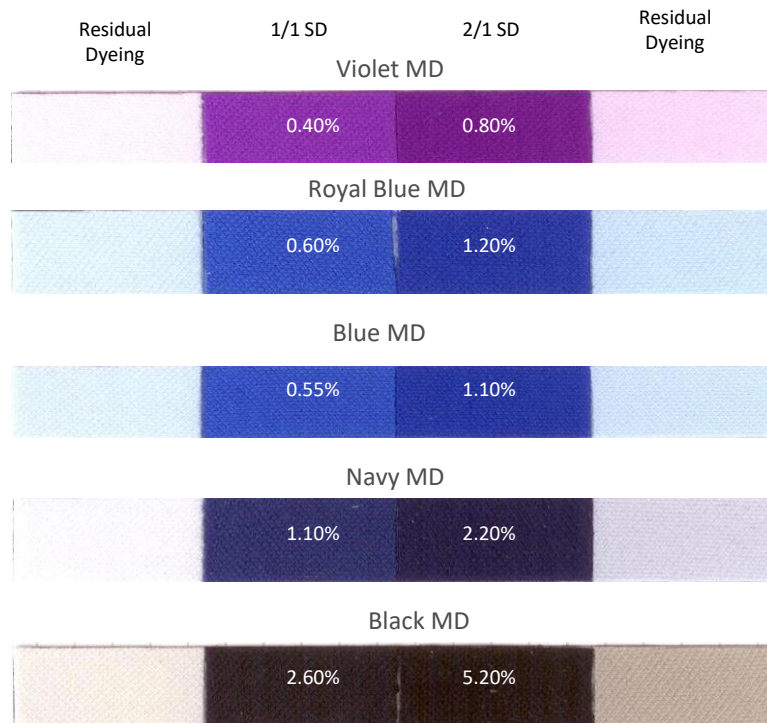
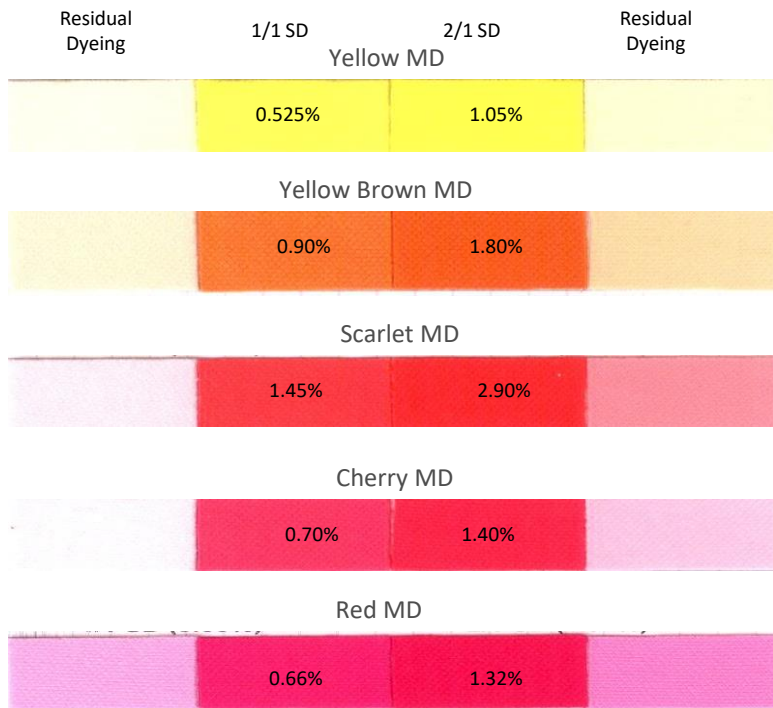


- Coralene Red MD (parlak Kırmızı)
- Coralene Royal Blue MD (parlak Mavi)
- Coralene Scarlet MD
- Coralene Green MD
- Coralene Violet MD
- Coralene Chery MD
- Coralene Turquoise MD

Coralene MD

Excellent Dyeing

- High Tinctorial Value
- High Exhaustion

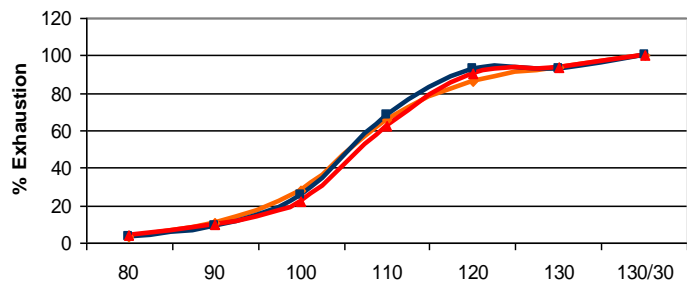


Coralene MD

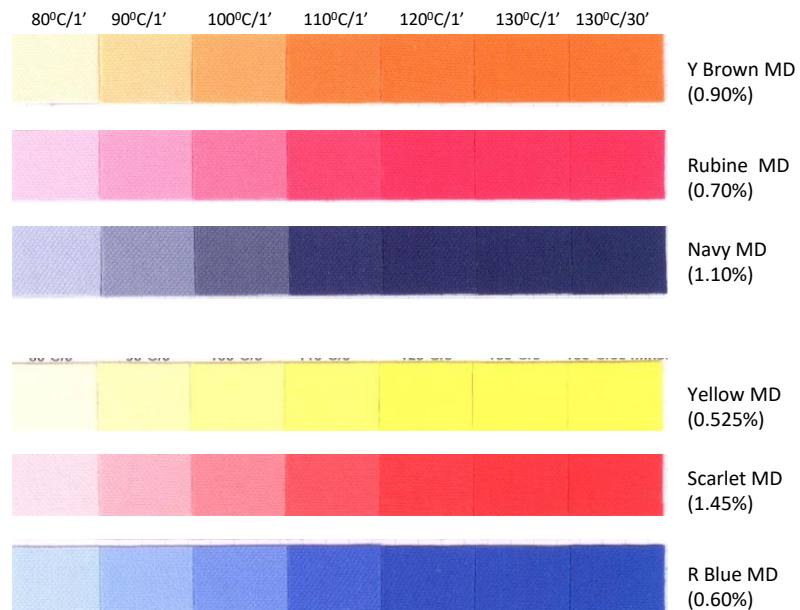
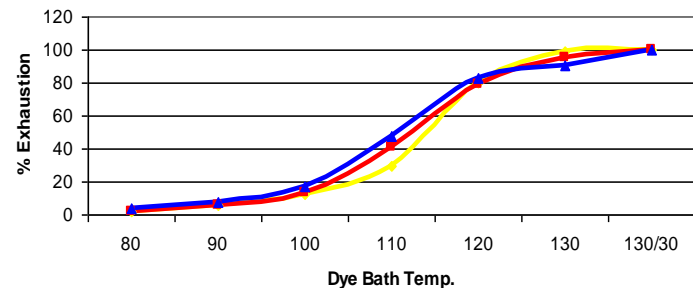
Excellent Dyeing

- Good Compatibility
- On Tone Exhaustion Even At Lower Temperature

Exhaustion Profile of Trichromatic Components: 2



Exhaustion Profile of Trichromatic Components: 1



Coralene MD

Excellent Dyeing

- Tri Chromatic Combinations:

Combination For :Dark Shades

Yellow Brown MD

Rubine MD

Navy MD

Combination For :Brilliant Shades

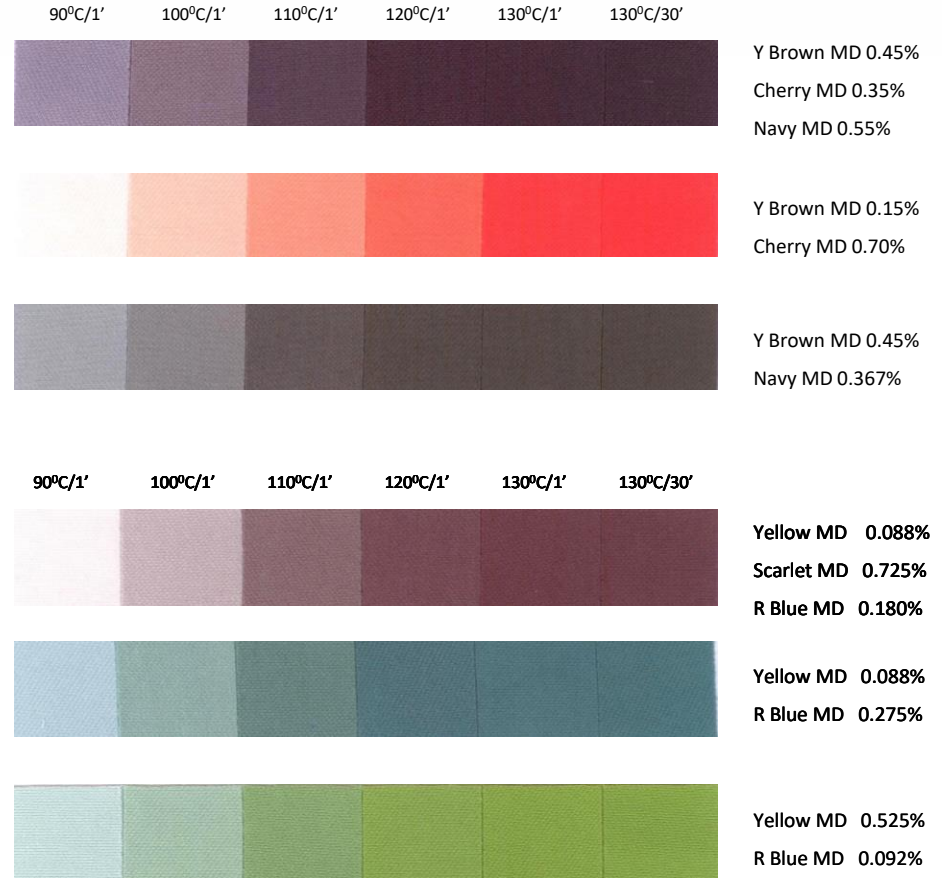
Yellow MD

Scarlet MD

Royal Blue MD

Exhaustion profile of tri chromatic combinations:
Combination Shades:

SÖZAL



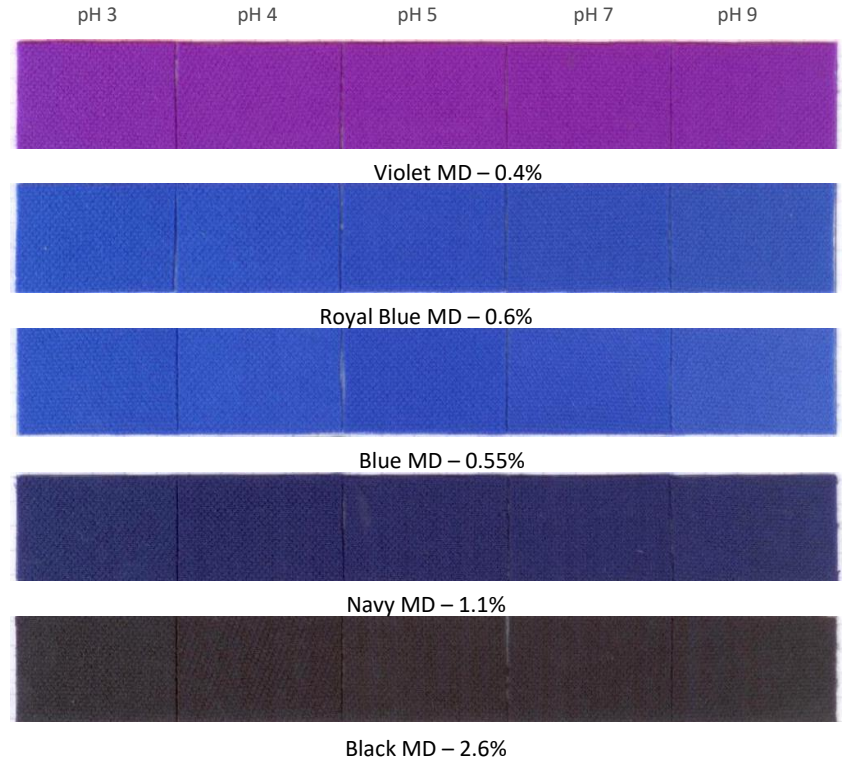
Coralene MD

Robust & Reproducible

- Stability To pH Variations



Dyeing at 130°C for 30 minutes with different dye bath pH



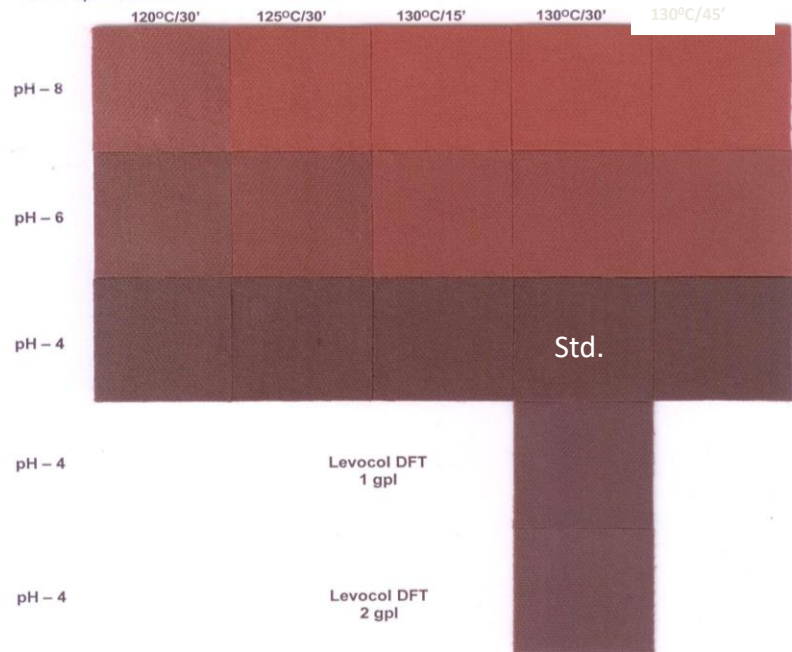
Coralene MD

Robust & Reproducible: Comparison of Ternary combination under various conditions

Effect of varying dyeing condition :

Conventional disperse dyes combination

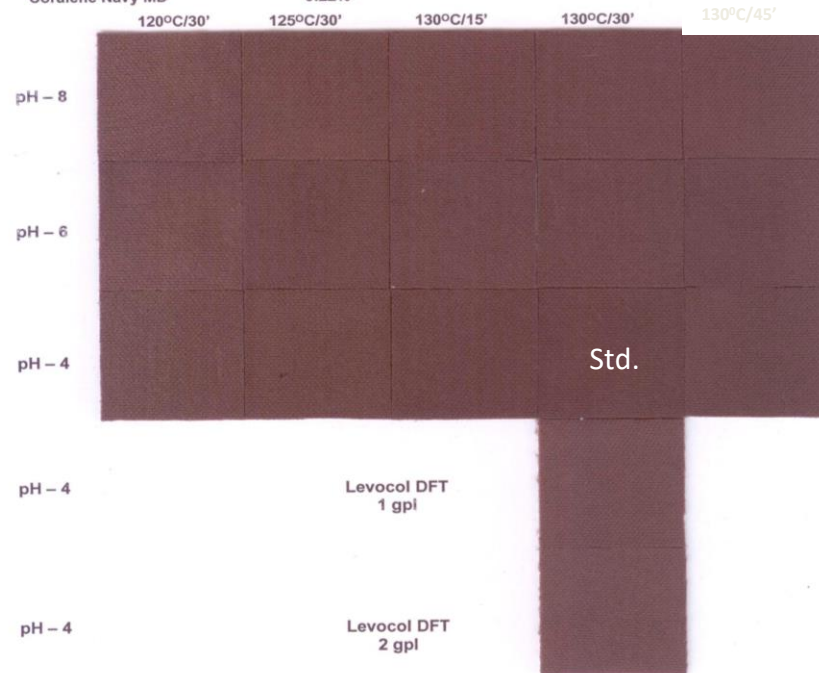
C. I. Disperse Orange 30	0.75%
C. I. Disperse Red 167 : 1	0.25%
C. I. Disperse Blue 79 : 1	0.25%



Coralene MD trichromatic combination : Robustness to varying dyeing condition.

Coralene MD combination

Coralene Yellow Brown MD	0.36%
Coralene Cherry MD	0.15%
Coralene Navy MD	0.22%



Coralene MD



Robust & Reproducible

- Less Sensitive To Variations In Final Dyeing Conditions

Coralene MD Recipe:

Yellow Brown MD – 0.36%

Cherry MD – 0.15%

Navy MD – 0.22%

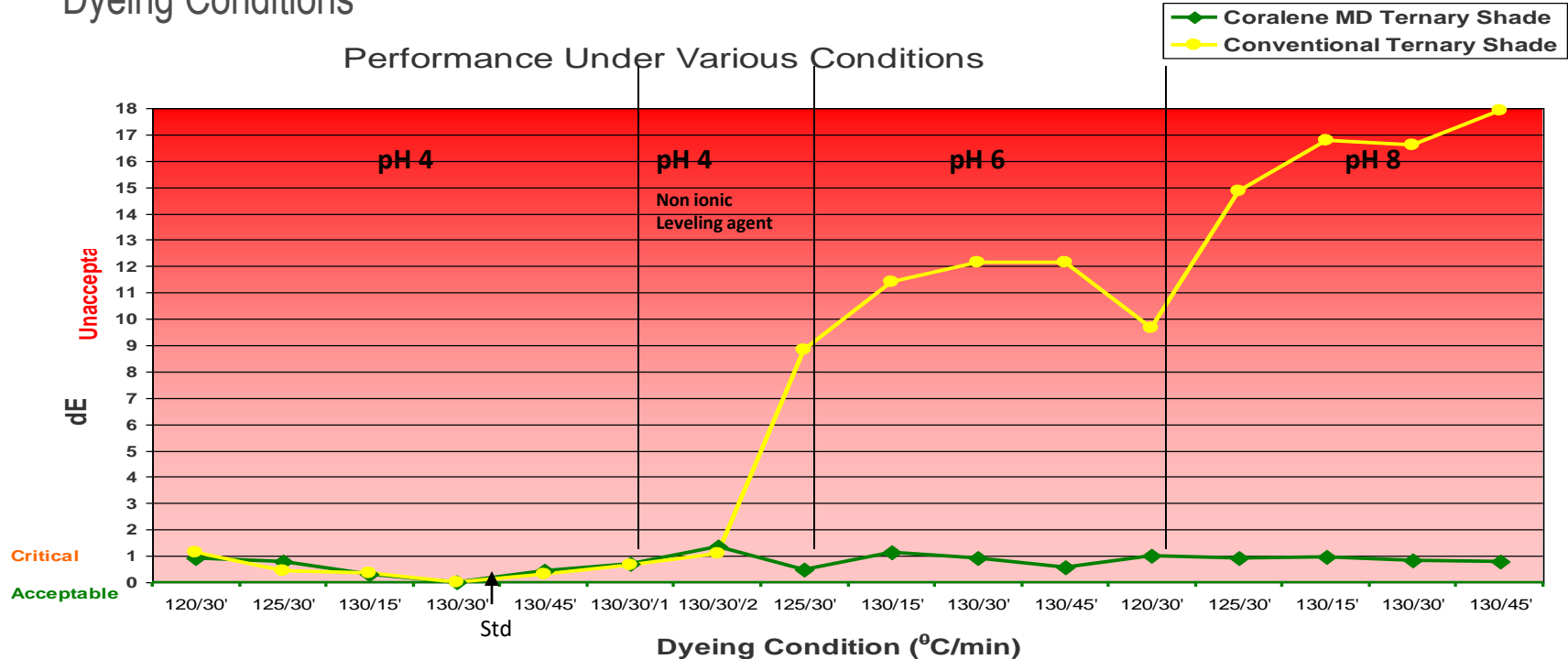
Conventional Recipe:

C.i. Disperse Orange 30 – 0.75%

C.I. Disperse Red 167.1 – 0.25%

C.I. Disperse Blue 79.1 – 0.25%

Performance Under Various Conditions



Coralene MD

Coralene MD Recipe:

Yellow Brown MD – 0.36%

Cherry MD – 0.15%

Navy MD – 0.22%

Conventional Recipe:

C.I. Disperse Orange 30 – 0.75%

C.I. Disperse Red 167.1 – 0.25%

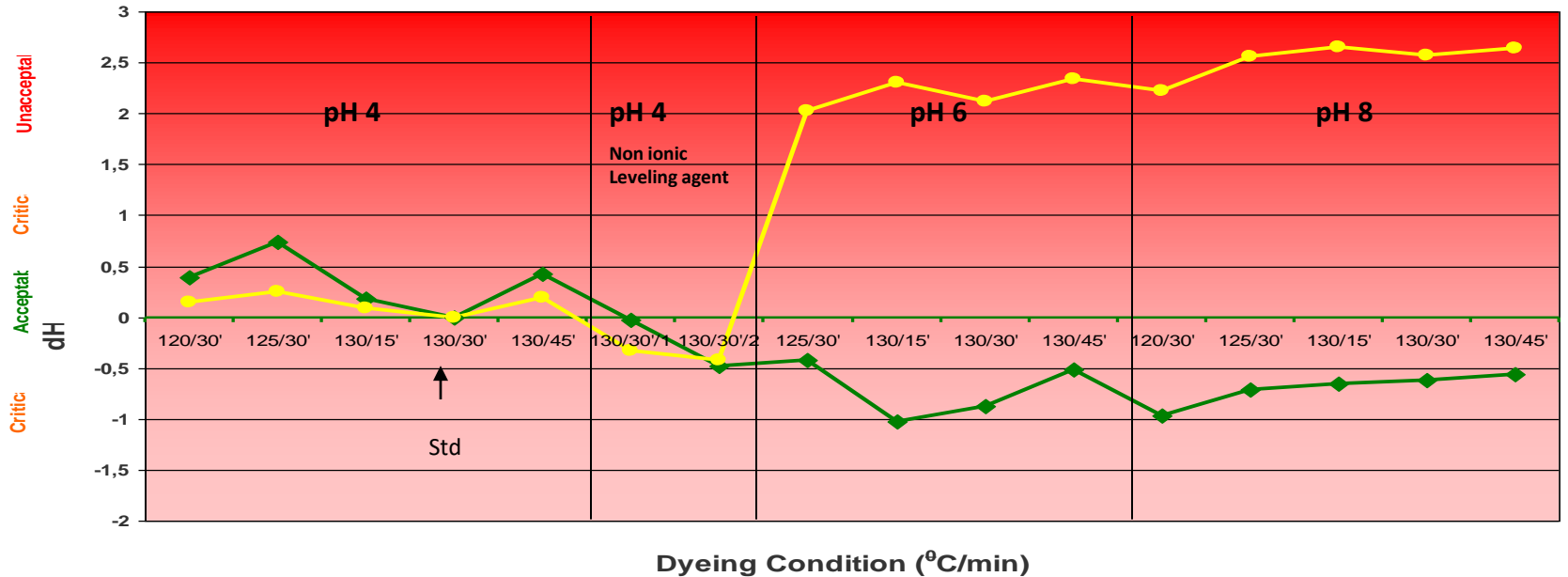
C.I. Disperse Blue 79.1 – 0.25%



Robust & Reproducible

- Less Sensitive To Variations In Final Dyeing Conditions

Performance Under Various Conditions

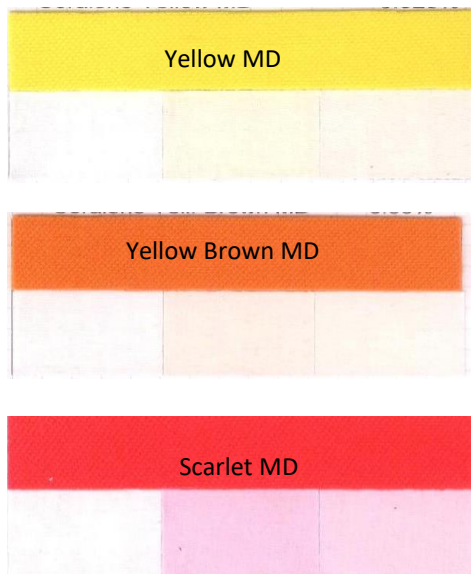


Coralene MD

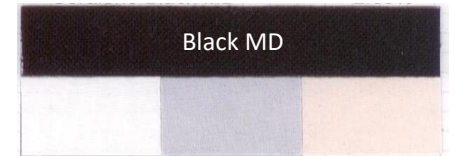
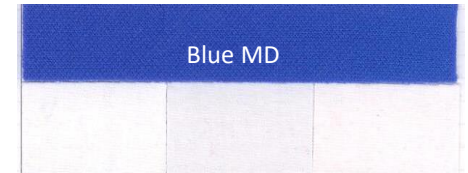
Wider Application Scope : PET/Cell Blends

- On Tone & Low Staining On Cellulose Portion In PET/Cell Blends
- Suitable For Exhaust/Continuous Process

Staining Profile In PET/COTTON (50 / 50) Dyeing At 130°C/30 Minutes:



SÖZAL



Coralene MD

Wider Application Scope: PET / Wool Blends

- On Tone Staining on Wool Portion in PET/ Wool Blends
- Suitable For Low Temperature Exhaust Process at 120°C

Staining on wool: Dyeing at 120°C for 30 minutes

Yellow MD – 0.525%



Yellow Brown MD – 0.9%



Scarlet MD – 0.7%



Cherry MD – 1.45%



Red MD – 0.66%



Violet MD – 0.4%



Royal Blue MD – 0.6%



Blue MD – 0.55%



Navy MD – 1.1%



Black MD – 2.6%



Original
Wool

Stained
Wool

Coralene MD

Wash Fastness – AATCC Test Method 61, Option 2A



All Round Fastness

- Low Change In Wash Fastness After Heat Setting

Staining on Polyamide in Multi fiber

Treated Sample

Before Heat Set	3-4			Coralene Yellow MD [0.525%]
After Heat Set	3-4			
Before Heat Set	3-4			Coralene Yell. Brown MD [0.90%]
After Heat Set	3-4			
Before Heat Set	3-4			Coralene Scarlet MD [1.45%]
After Heat Set	3			
Before Heat Set	3-4			Coralene Cherry MD [0.70%]
After Heat Set	3-4			
Before Heat Set	4			Coralene Red MD [0.66%]
After Heat Set	2			
Before Heat Set	4			Coralene Violet MD [0.40%]
After Heat Set	3-4			
Before Heat Set	4			Coralene Royal Blue MD [0.60%]
After Heat Set	4			
Before Heat Set	4			Coralene Blue MD [0.55%]
After Heat Set	4			
Before Heat Set	4			Coralene Navy MD [1.10%]
After Heat Set	3-4			
Before Heat Set	4-5			Coralene Black MD [2.60%]
After Heat Set	4			

Coralene MD

All Round Fastness

- Low Change In Wash Fastness After Heat Setting

Wash Fastness – ISO Test Method 105 C03

SÖZAL

Before Heat Set
After Heat Set
Before Heat Set
After Heat Set
Before Heat Set
After Heat Set
Before Heat Set
After Heat Set
Before Heat Set
After Heat Set
Before Heat Set
After Heat Set
Before Heat Set
After Heat Set
Before Heat Set
After Heat Set
Before Heat Set
After Heat Set
Before Heat Set
After Heat Set

Staining on Multi fiber



Treated Sample

	Coralene Yellow MD [0.525%]
	Coralene Yell. Brown MD [0.90%]
	Coralene Scarlet MD [1.45%]
	Coralene Cherry MD [0.70%]
	Coralene Red MD [0.66%]
	Coralene Violet MD [0.40%]
	Coralene Royal Blue MD [0.60%]
	Coralene Blue MD [0.55%]
	Coralene Navy MD [1.10%]
	Coralene Black MD [2.60%]

Coralene MD

- Light Fastness
- Wash Fastness
- Perspiration Fastness



All Round Fastness

Coralene MD	Light Fastness		Sublimation	Washing		Perspiration	
	AATCC 16 Option 3: 2004 1/1 SD		180 C/30 Sec. 1/1 SD	C/CO/PA/PES/WO CO3 AATCC/		C/CO/PA/PES/WO	
	20AFU	40AFU		60C.	2A	Alkali	Acid
Yellow MD	5	4-5	3-4	4-5	4-5	4-5	4-5
				4-5	4-5	4-5	4-5
				4-5	4-5	4-5	4-5
				4-5	4-5	4-5	4-5
				4-5	4-5	4-5	4-5
Yell. Brown MD	5	4-5	3-4	4-5	4-5	4-5	4-5
				4-5	4-5	4-5	4-5
				3-4	3-4	4-5	4-5
				4-5	4-5	4-5	4-5
				4-5	4-5	4-5	4-5
Scarlet MD	4-5	4	4-5	4-5	4-5	4-5	4-5
				4-5	4-5	4-5	4-5
				3-4	2-3	4-5	4-5
				4-5	4-5	4-5	4-5
				4-5	4-5	4-5	4-5
Cherry MD	4-5	4	4-5	4-5	4-5	4-5	4-5
				4-5	4-5	4-5	4-5
				4-5	4-5	4-5	4-5
				4-5	4-5	4-5	4-5
				4-5	4-5	4-5	4-5
Red MD	4-5	4	3-4	4-5	4-5	4-5	4-5
				4-5	4-5	4-5	4-5
				2-3	2-3	4-5	4-5
				4-5	4-5	4-5	4-5

Coralene MD	Light Fastness		Sublimation	Washing		Perspiration	
	AATCC 16 Option 3: 2004 1/1 SD		180 C/30 Sec. 1/1 SD	C/CO/PA/PES/WO CO3 AATCC/		C/CO/PA/PES/WO	
	20AFU	40AFU		60C.	2A	Alkali	Acid
Violet MD	4-5	4	3-4	4-5	4-5	4-5	4-5
				4-5	4-5	4-5	4-5
				3-4	2-3	4-5	4-5
				4-5	4-5	4-5	4-5
				4-5	4-5	4-5	4-5
Royal Blue MD	4	3-4	3-4	4-5	4-5	4-5	4-5
				4-5	4-5	4-5	4-5
				3-4	2-3	4-5	4-5
				4-5	4-5	4-5	4-5
				4-5	4-5	4-5	4-5
Blue MD	4	3-4	3-4	4-5	4-5	4-5	4-5
				4-5	4-5	4-5	4-5
				3-4	2-3	4-5	4-5
				4-5	4-5	4-5	4-5
				4-5	4-5	4-5	4-5
Navy MD	4-5	4	3-4	4-5	4-5	4-5	4-5
				4-5	4-5	4-5	4-5
				2-3	2-3	4-5	4-5
				3-4	4-5	4-5	4-5
				4-5	4-5	4-5	4-5
Black MD	4-5	4	3-4	4-5	4-5	4-5	4-5
				4-5	4-5	4-5	4-5
				2-3	2-3	4-5	4-5
				4-5	4-5	4-5	4-5

**High
Tinctorial
Value**

**Suitable For
PET & Blends**

Compatible

**Low & On Tone
Staining On
Other Substrates**

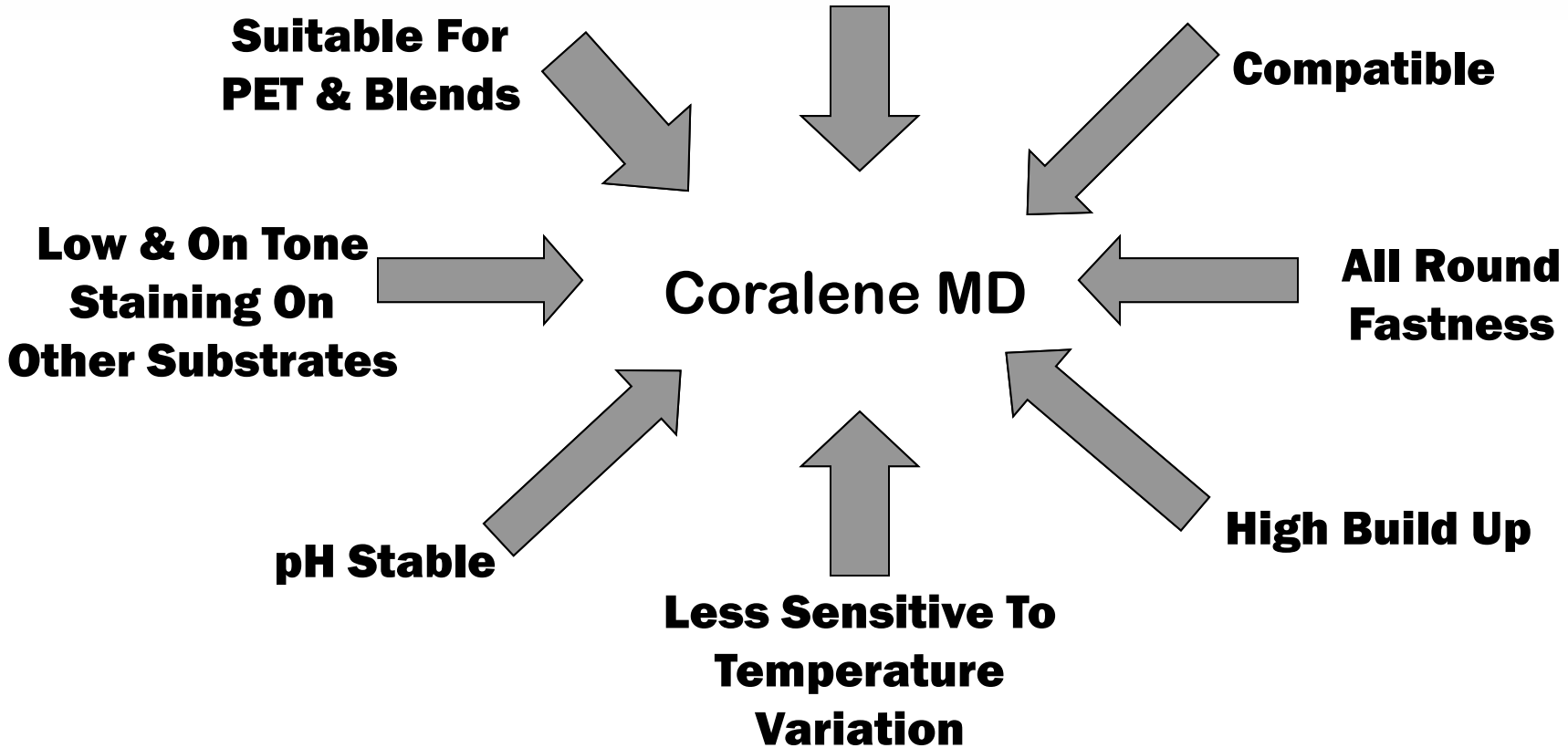
Coralene MD

**All Round
Fastness**

pH Stable

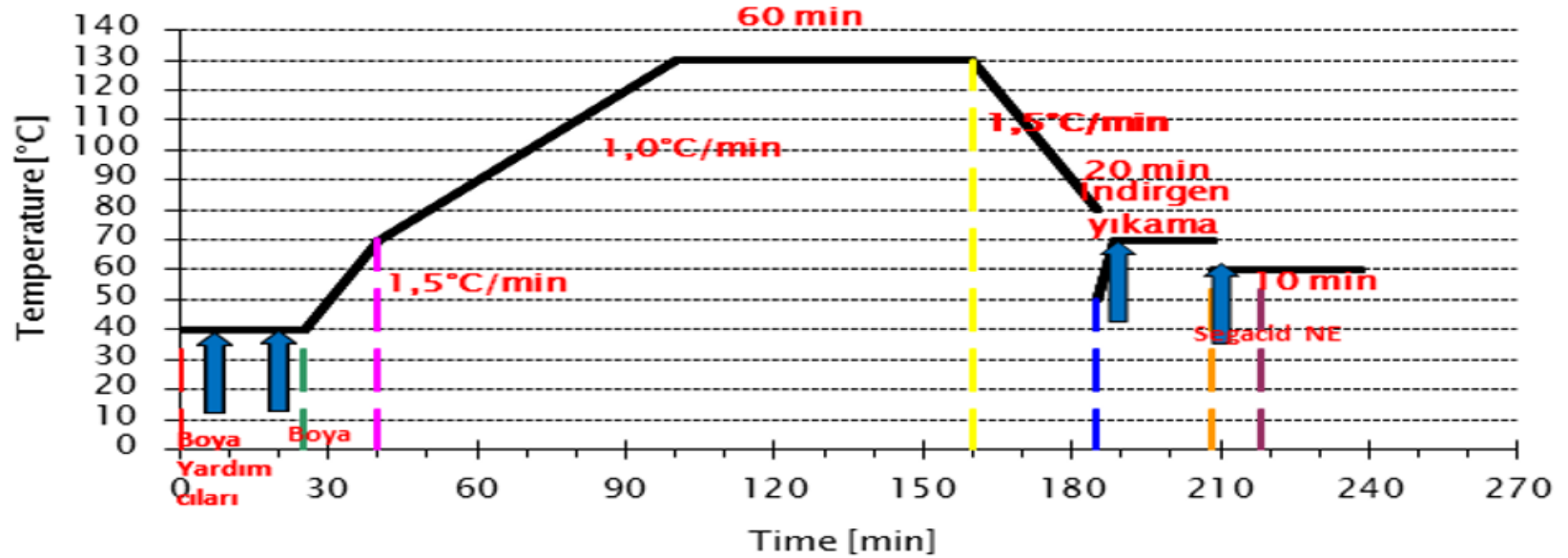
High Build Up

**Less Sensitive To
Temperature
Variation**



Dyeing Process

SÖZAL



Boya Yardımcıları:

- Seganal A90
- ph:4,5 Segacid TMP ile



Uyumluluklar / Compliance



GOTS Approved Reactive Dyes
& Performance Chemicals



ISO 14001:2004 &
OHSAS 18001:2007 certified

ZDHC

MRSI-compliant products

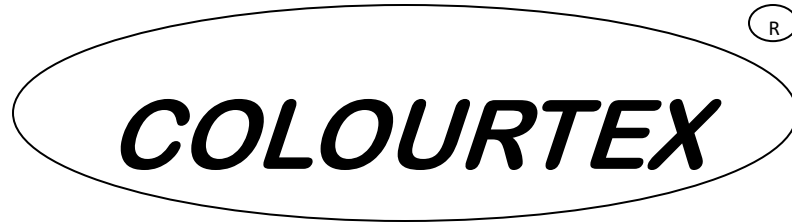


ISO 9001 - 2008 Certified

Colourtex firmasının sahip olduğu uluslararası kalite standartları.
International quality standards Colourtex owned by the company.

- Blue Sign
- REACH pre registration
- Oekoteks
- ISO 14001:2004 OHSAS 18001:2007
- GOTS
- ISO 9001: 2008
- ETAD
- Responsible Care
- ZDHC

THANKS!!



Your reliable partner in textile colouration

Visit www.colourtex.com