

Coralene Rubine GFL 200%

A high strength medium energy deep red disperse dye with suitability for various applications on polyester

Suitability / Application:

Substrate:

Fiber / Yarn	-	◐
Sewing threads	-	●
Piece dyeing	-	●
Micro fibers / fabric	-	◻
P/C Blends - Exhaust, 2 bath	-	●
P/C Blends - Continuous	-	◻
P/Elastane Blends	-	◻
P/W Blends	-	○

Process:

Exhaust dyeing:

Low temperature with carrier	-	◐
Carrier dyeing at 110°C	-	●
HT, 130°C	-	●
HT, Alkaline dyeing (buffered at pH 9.5)	-	○

Continuous dyeing

	-	◻
--	---	---

Printing

	-	●
--	---	---

Development method in printing:

Pressure Steaming	-	●
HT Loop Steaming	-	●

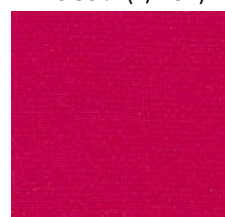
Discharge printing

	-	●
Dischargeable ground	-	●
Discharge resistant illuminant	-	○

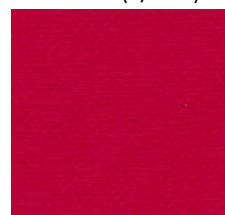
Exhaust Dyeing
0.167% (1/3 SD)



0.50 % (1/1 SD)



1.00% (2/1 SD)



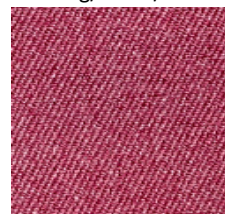
(Dyeing at 130°C for 45 min on polyester fabric at pH 4 adjusted with Levocol 4398)

General properties:

C.T.Z.:	100° - 120°C
Leveling at 130°C:	Good
Migration:	Good
pH range for application :	3.0 - 6.0
Dischargeability:(Zinc sulphoxylate formaldehyde)	Good
Sensitivity to metal (Fe):	Low
Stripping method:	Reductive
Saturation value in HTHP exhaust dyeing: (On 80D/36F polyester knit fabric)	2.50%

Continuous dyeing

5.00 g/l on P/C cloth



Shade change under artificial light:

D 65	Inc A	F 11 (TL 84)	F02 (CWF)	UL 35
Control	YY	G	GG	G

Cross staining on other components of blends in one bath dyeing:

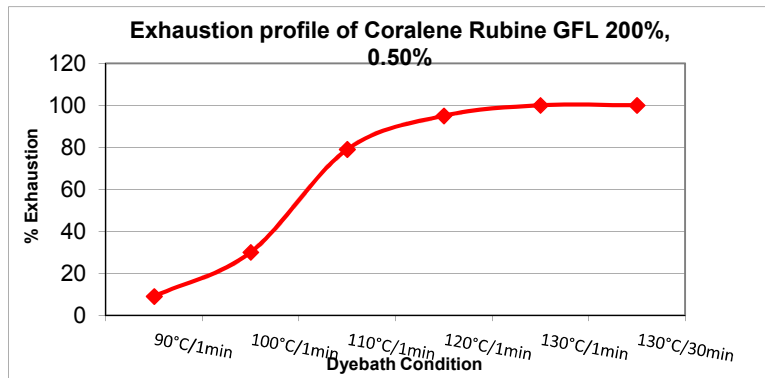
Substrate	CA	PAN	PA	Cellulosic	Wool
Staining in dyebath	High	Moderate	High	Low	Moderate
Staining after R.C.	High	Moderate	High	Low	Low

(Abbreviation: ● - Suitable, ○ - Not Suitable, ◐ - Limited suitability, ◻ - Not Recommended, R - Redder,

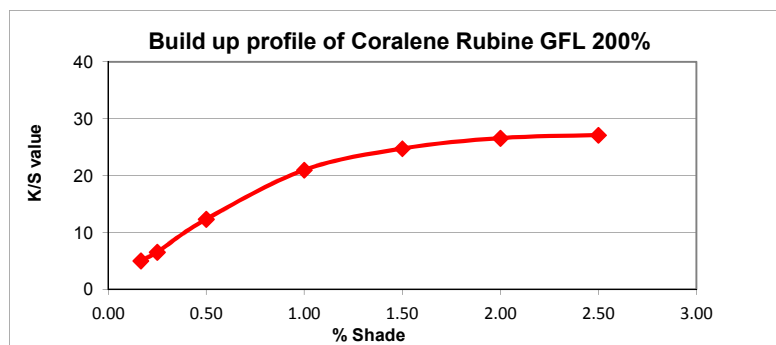
G - Greener, B - Bluer)

Coralene Rubine GFL 200%

Product Performance:



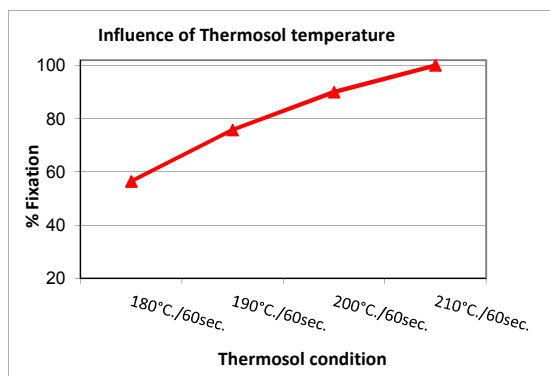
(Dyeing at different dyebath temperature on polyester fabric at pH 4 adjusted with Levocol 4398)



(Exhaust dyeing different depth at 130°C temperature for 45 min on polyester fabric at pH 4 adjusted with Levocol 4398)

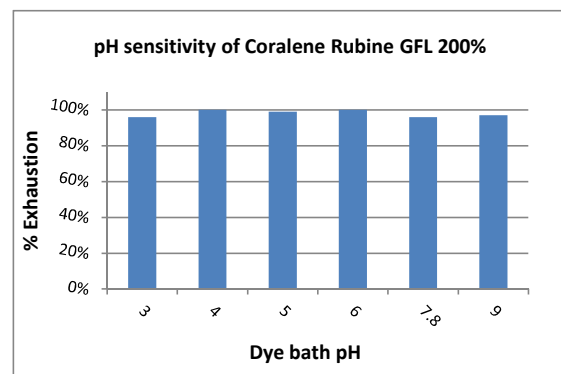
Thermosol Application:

5.00 gpl Coralene Rubine GFL 200% on P/C fabric



pH Sensitivity:

0.50 % Coralene Rubine GFL 200% in exhaust dyeing



Fastness Properties: (Tested on 80D/36F 100% PET Knit dyed by exhaust method)

- Light fastness (ISO 105 B02)
- Light fastness (AATCC 16, Option 3, 20 AFU)
- Sublimation fastness 1/1 SD (ISO 105 P01, 30 Sec)

Shade change (Rating)		
1/6 SD	1/3 SD	1/1 SD
6	5-6	6
4.0	4.0	4.0

Temperature	180°C	190°C	200°C
C.O.S.	4	4	4
Staining on PET	4	3-4	3

Coralene Rubine GFL 200%

Fastness Properties: (Tested at 0.50 % depth, on 80D/36F 100% PET Knit dyed by exhaust method and post set at 180°C for 30 Sec)

		Staining on							
		C.O.S.	Acetate	Cotton	Nylon	Polyester	Acrylic	Wool	
● Perspiration Light fastness (ISO 105 B07)	Acidic	4-5							
● Perspiration Light fastness (ISO 105 B07)	Alkaline	4-5							
● Wash fastness (ISO 105 C06, A2S,)		4	4	4-5	4	4-5	4-5	4-5	
● Wash fastness (ISO 105 C06, C2S,)		4	3	4	3	4	4-5	4	
● Wash fastness (ISO 105 C10 C, 60°C)		4	4	4-5	4	4-5	4-5	4-5	
● Wash fastness (AATCC 61 Option 2A, 49°C)		4.0	3.0	4.0	3.0	4.0	4.5	4.0	
● Dry cleaning fastness (ISO 105 D01)		4	4-5	4-5	4-5	4-5	4-5	4-5	
● Water fastness (ISO 105 E01)		4-5	4	4-5	4	4-5	4-5	4-5	
● Sea water fastness (ISO 105 E02)		4-5	4	4-5	4	4-5	4-5	4-5	
● Chlorinated water (ISO 105 E03)	20 ppm	4							
● Chlorinated water (ISO 105 E03)	50 ppm	3-4							
● Perspiration fastness (ISO 105 E04)	Acidic	4-5	4	4-5	4	4-5	4-5	4-5	
● Perspiration fastness (ISO 105 E04)	Alkaline	4-5	4	4-5	4	4-5	4-5	4-5	
● Hypochlorite bleach fastness (ISO 105 N01)		4							
● Peroxide bleach fastness (ISO 105 N02)		4		4-5		4-5			
● Crocking fastness (ISO 105 X12, Dry/Wet)				4-5/4-5					
● PVC migration (ISO 105 X10)		4	(Staining on PVC film)						
● Saliva fastness (DIN 53160)		5.0	(Staining on filter paper)						

Note:

Disclaimer: This information is provided in good faith, to the best of our knowledge and without liabilities.



Colourtex Industries Private Limited,

91, Bhestan, Surat - 395023 (India)

Domestic: Tel.: +91 261 2897800/2897801

Export: Tel.: +91 261 2891427 /2897428

E mail: sales.surat@colourtex.co.in

E mail: ctx.export@colourtex.co.in