

Levaset Grey G

Short Profile

- Bluish grey with good washing and chlorine fastness
- Excellent compatibility with Levaset Yellow 2R and Red G

Substrate Suitability :

Polyamide	S
Wool	S
Silk	S

General properties:

Solubility at 90°C	70
Dischargeability (Zn Sulfoxylate Formaldehyde)	3

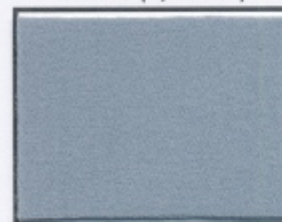
Shade change under article light:

D65	Inc A	F11 (TL 84)
Control	T. Redder	M. Redder/Bluer

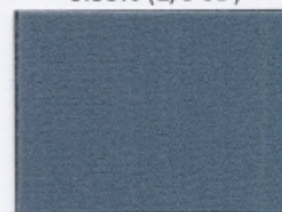
Cross staining on other components of blends in one bath dyeing :



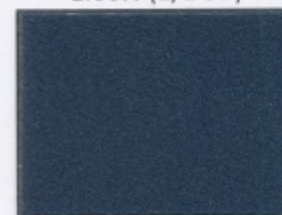
0.08% (1/12 SD)



0.33% (1/3 SD)

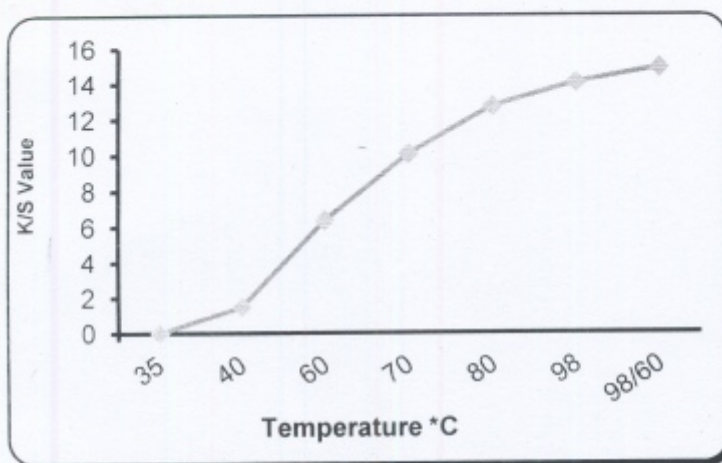


1.00% (1/1 SD)

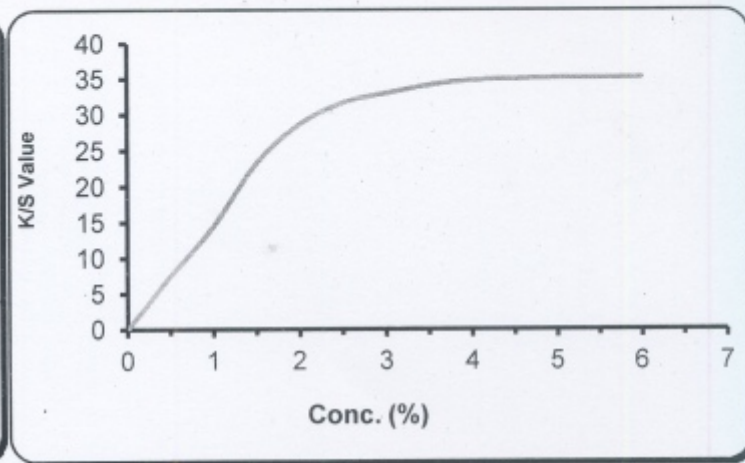


(Exhaust Dyeing on PA fabric at 98°C for 45 min pH 4-5 with Buffer System)

Exhaustion Fixation: (1/1 S/D)



Saturation Curve:



(This information is provided in good faith, to the best of our knowledge and without liability)




Fastness Properties Details

After Treatment	PA 6			PA 6,6					
Light Fastness Shade depth	1/12	1/3	1/1	1/12	1/3	1/1			
Light fastness (ISO 105 B02)- Up to grade 6	4	4-5	5	3-4	4	5			
Light fastness (AATCC 16E) 20 AFU	4	4-5	5	4	4-5	5			
Light fastness (AATCC 16E) 40 AFU	4	4-5	5	3	3-4	4-5			
After Treatment	Without				With 2% Levacol NR				
Wet Fastness properties on 1/1 SD	CS	WO	PA	CO	CS	WO	PA	CO	
Wash fastness (ISO 105 C10 - B (50 ^o C)	4-5	3-4	3-4	4	4-5	4	3	3-4	
Wash fastness (ISO 105 C10 - C (60 ^o C)	4	4	3	3-4	4	4	4	4-5	
Wash fastness ((AATCC 61 Option 2A,49 ^o C,)	4	4	4	3-4	4	4	4	4	
Water Sever (ISO 105 E01)	4-5	4	4-5	4-5	4-5	4	4-5	4-5	
Fastness to Sea Water (ISO 105 E02)	4-5	4	4-5	4-5	4-5	4-5	4	4-5	
Perspiration fastness (ISO 105 E04)	Acid	4-5	4	4-5	4-5	4-5	4	4-5	4-5
	Alkaline	5	4	4-5	4-5	4	4	4-5	4-5
Fastness to Dry Cleaning (ISO 105 D01-1993)	4	4-5	4-5	4-5	4	4-5	4-5	4-5	

Crocking Fastness (ISO 105 X12)	Dry	5	Wet	4-5
Fastness to Chlorinated water (ISO 105 E03)	20ppm	3-4	50ppm	3-4

Stripping with recommended Recipe :

Heat up to 98^oC & hold for 30 min, then rinse neutralisation with Acetic acid (pH 5.5) at Room Temp. followed by warm and cold wash.

Original Fabric	3 gpl Levacol CBSE 3 % Soda Ash	5 gpl Levacol ECO 4 pH Acetic Acid
		

(Levocol NR – 2.0% w.o.f + acetic acid – 4 pH at 70^oC/20 min.)

Remarks:-

Abbreviation: S-Suitable, NS - Not Suitable

(CS = Change of Shade , SW = Staining on Wool , SP = Staining on Polyamide , SC = Staining on Cotton ,)

(This information is provided in good faith, to the best of our knowledge and without liability