

Coralene Royal Blue HP-EL

A bright reddish blue disperse dye having high sublimation property and overall good fastness profile. Suitable for royal blue, deep reddish blue hues in combination with Brill Red HP-BFS or Brill Red HP-3BS and also for bright green hues.

Suitability / Application:

Substrate:

Fiber / Yarn	-	●
Sewing threads	-	●
Piece dyeing	-	●
Micro fibers / fabric	-	●
P/C Blends - Exhaust, 2 bath	-	●
P/C Blends - Continuous	-	●
P/Elastane Blends	-	●
P/W Blends	-	○

Process:

Exhaust dyeing:

Low temperature with carrier	-	○
HT, 135°C	-	●
HT, Alkaline dyeing	-	○

Continuous dyeing	-	●
-------------------	---	---

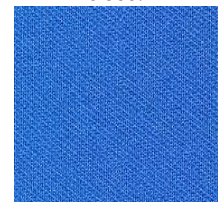
Printing	-	●
----------	---	---

Development method in printing:

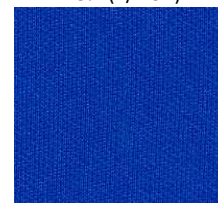
Pressure Steaming	-	◐
HT Loop Steaming	-	●
Discharge printing	-	■

Exhaust Dyeing

0.500%



1.5% (1/1 SD)



3.00%



[Dyeing at 135°C for 45 min on polyester fabric at pH 4 adjusted with Levocol 4398]

General properties:

C.T.Z.:	-	115 - 135°C
Leveling at 135°C:	-	Moderate
Migration:	-	Moderate
Recommended pH with buffer system :	-	4.0
Recommended auxiliary:	-	Levocol OA, 3 - 4 g/l
Dischargeability:(Zinc sulphonylate formaldehyde)	-	Moderate
Sensitivity to metal (Fe)	-	Low
Stripping method	-	Reductive
Saturation value in HTHP exhaust dyeing (On 80D/36F polyester knit fabric)	-	3.50%

Continuous dyeing

15.0 g/l on P/C cloth



Shade change under artificial light:

D 65	Inc A	F 11 (TL 84)	F02 (CWF)	UL 35
Control	R	RR	RR	RR

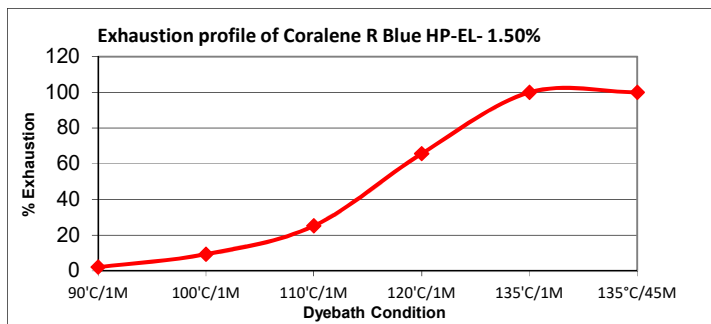
Cross staining on other components of blends in one bath dyeing:

Substrate	CA	PAN	PA	Cellulosic	Wool
Staining in dyebath	High	Moderate	High	Moderate	Moderate
Staining after R.C.	High	Low	High	Moderate	Low

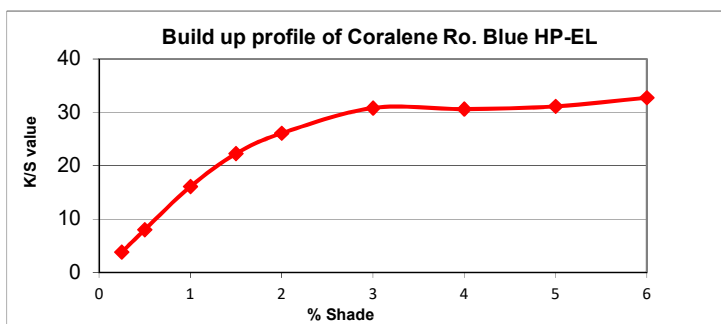
(Abbreviation: ● - Suitable, ○ - Not Suitable, ◐ - Limited suitability, ■ - Not Recommended, R - Redder, G - Greener, Y - Yellower, B - Bluer)

Coralene Royal Blue HP-EL

Product Performance:



(Dyeing at different dyebath temperature on polyester fabric at pH 4 adjusted with Levocol 4398)



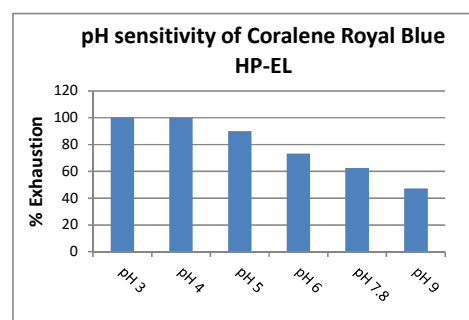
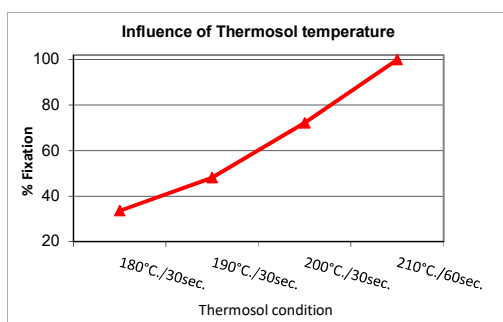
(Exhaust dyeing different depth at 135°C temperature for 45 min on polyester fabric at pH 4 adjusted with Levocol 4398)

Thermosol Application: (Pad - Dry - Thermosol)

15.0 gpl Coralene Royal Blue HP-EL on P/C fabric

pH Sensitivity:

1.50% Coralene Royal Blue HP-EL in exhaust dyeing



Fastness Properties: (Tested on 80D/36F 100% PET Knit, dyed by exhaust method)

- Light fastness (ISO 105 B02)
- Light fastness (AATCC 16, Option 3, 20 AFU)
- Sublimation fastness 1/1 SD (ISO 105 P01)

Shade change (Rating)		
1/6 SD	1/3 SD	1/1 SD
4	3-4	3-4
3.0	3.0	3.5

Temperature	180°C	190°C	200°C
C.O.S.	4-5	4-5	4-5
Staining on PET	4-5	4-5	4

Coralene Royal Blue HP-EL

Fastness Properties: (Tested at 1.50% depth, on 80D/36F 100% PET Knit dyed by exhaust method and post set at 180⁰C for 30 Sec)

		Staining on						
		C.O.S.	Acetate	Cotton	Nylon	Polyester	Acrylic	Wool
● Perspiration Light fastness (ISO 105 B07)	Acid	4-5						
● Perspiration Light fastness (ISO 105 B07)	Alkaline	4-5						
● Wash fastness (ISO 105 C10 C, 60 ⁰ C)		4	4-5	4-5	4-5	4-5	4-5	4-5
● Wash fastness (ISO 105 C06, C2S,)		4	4-5	4-5	4-5	4-5	4-5	4-5
● Wash fastness (AATCC 61 Option 2A,49 ⁰ C)		4.0	4.5	4.5	4.5	4.5	4.5	4.5
● M&S C4A, 60 ⁰ C		4	4-5	4-5	4-5	4-5	4-5	4-5
● Adidas Wash fastness, 60 ⁰ C		4	4-5	4-5	4-5	4-5	4-5	4-5
● Dry cleaning fastness (ISO 105 D01)		4	4-5	4-5	4-5	4-5	4-5	4-5
● Water fastness (ISO 105 E01)		4-5	4-5	4-5	4-5	4-5	4-5	4-5
● Sea water fastness (ISO 105 E02)		4-5	4-5	4-5	4-5	4-5	4-5	4-5
● Chlorinated water fastness,(Adidas 5.06, 50 ppm)		4						
● Perspiration fastness (ISO 105 E04,Acid)		4-5	4-5	4-5	4-5	4-5	4-5	4-5
● Perspiration fastness (ISO 105 E04,Alkaline)		4-5	4-5	4-5	4-5	4-5	4-5	4-5
● Burnt gas fumes fastness (ISO 105 G02, 3 cycles)		4-5						
● Hypochlorite bleach fastness (ISO 105 N01)		4-5						
● Peroxide bleach fastness (ISO 105 N02)		4-5		4-5		4-5		
● Mercerization fastness (ISO 105 X04)		4-5		4-5				
● PVC migration (ISO 105 X10)		3	(Staining on PVC foil)					
● Crocking Fastness (ISO 105 X12, Dry/Wet)			4-5/4-5					
● Migration during storage (AATCC TM 163)		4.0	4.5	4.5	4.5	4.5	4.5	4.5
● Saliva fastness (DIN 53160)		5	(Staining on filter paper)					

Fastness Properties: (Tested at 5.00% depth, on 100% micro PET Knit (0.5 dpf) dyed by exhaust method and post set at 180⁰C for 30 Sec)

		Staining on						
		C.O.S.	Acetate	Cotton	Nylon	Polyester	Acrylic	Wool
● Light fastness (ISO 105 B02)		3						
● Wash fastness (ISO 105 C06, C2S,)		4	4-5	4-5	4-5	4-5	4-5	4-5
● Wash fastness (AATCC 61 Option 2A,49 ⁰ C)		4.0	4.0	4.0	3.5	3.5	4.0	4.5
● Water fastness (ISO 105 E01)		4-5	4-5	4-5	3-4	4-5	4-5	4-5
● Crocking Fastness (ISO 105 X12, Dry/Wet)			4/4					

Fastness Properties: (Tested at 15.0 g/l depth, on P/C (67/33) blend twill fabric by continuous dyeing method and post set at 180⁰C for 30 Sec)

		Staining on						
		C.O.S.	Acetate	Cotton	Nylon	Polyester	Acrylic	Wool
● Wash fastness (ISO 105 C06, C2S,)		4	4-5	4-5	4-5	4-5	4-5	4-5
● Wash fastness (AATCC 61 Option 2A,49 ⁰ C)		4.0	4.0	4.5	4.0	4.0	4.5	4.5
● Water fastness (ISO 105 E01)		4-5	4-5	4-5	4-5	4-5	4-5	4-5
● Crocking Fastness (ISO 105 X12, Dry/Wet)			4-5/4-5					

Note:

Disclaimer: This information is provided in good faith, to the best of our knowledge and without liabilities.