

## Coralene Black MD

A robust, high strength black disperse dye with redder hue. Suitable for producing deep black shades conveniently.

### Suitability / Application:

#### Substrate:

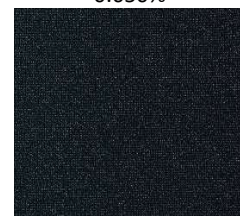
|                              |   |   |
|------------------------------|---|---|
| Fiber / Yarn                 | - | ○ |
| Sewing threads               | - | ● |
| Piece dyeing                 | - | ● |
| Micro fibers / fabric        | - | ○ |
| P/C Blends - Exhaust, 2 bath | - | ● |
| P/C Blends - Continuous      | - | ● |
| P/Elastane Blends            | - | ○ |
| P/W Blends                   | - | ● |

#### Process:

##### Exhaust dyeing:

|                                     |   |   |
|-------------------------------------|---|---|
| Low temperature with carrier        | - | ○ |
| HT, 110 <sup>o</sup> C with carrier | - | ● |
| HT, 130 <sup>o</sup> C              | - | ● |
| HT, Alkaline dyeing with pH buffer  | - | ● |
| Continuous dyeing                   | - | ● |
| Printing                            | - | ○ |
| Discharge printing                  | - | ○ |

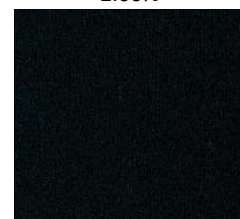
**Exhaust Dyeing**  
0.650%



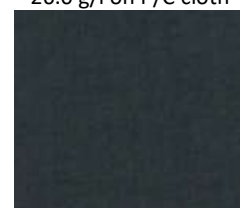
1.3% (1/1 SD)



2.60%



**Continuous dyeing**  
26.0 g/l on P/C cloth



(67/33 Blend)

(Dyeing at 130<sup>o</sup>C for 30 min on polyester fabric at pH 4 adjusted with Levocol 4398)

### General properties:

|   |       |                         |
|---|-------|-------------------------|
| Energy class:   |       | SE                      |
| C.T.Z.:   |       | 90 - 120 <sup>o</sup> C |
| Leveling at 130 <sup>o</sup> C:   |       | Good                    |
| Migration:  |       | Low                     |
| pH range in dyeing :  |       | 4.0-8.0                 |
| Dischargeability:(Zinc sulphonylate formaldehyde)                             |       | Low                     |
| Sensitivity to metal (Fe)   |       | Low                     |
| Saturation value in HTHP exhaust dyeing<br>(On 80D/36F polyester knit fabric) |       | 3.00%                   |
| Staining of wool in fiber blend exhaust dyeing at 120 <sup>o</sup> C          | Rinse | 1                       |
|   | R.C.  | 1-2 (On tone)           |

### Shade change under artificial light:

|         |       |              |           |       |
|---------|-------|--------------|-----------|-------|
| D 65    | Inc A | F 11 (TL 84) | F02 (CWF) | UL 35 |
| Control | R     | G            | Tr B      | G     |

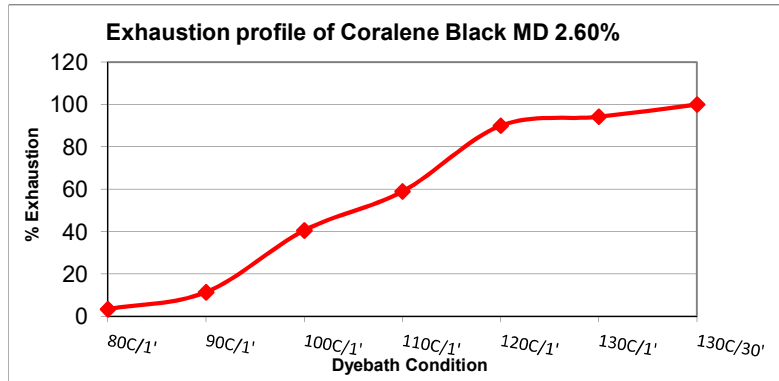
### Cross staining on other components of blends in one bath dyeing:

| Substrate           | CA    | PAN       | PA    | Cellulosic | Wool      |
|---------------------|-------|-----------|-------|------------|-----------|
| Staining in dyebath | High  | Moderate  | High  | Moderate   | Moderate  |
| Staining after R.C. | High* | Moderate* | High* | Low        | Moderate* |

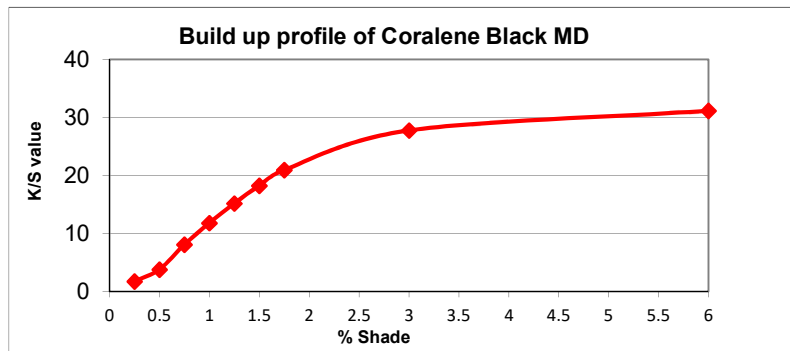
( Abbreviation: ● - Suitable, ○ - Not Suitable, ○ - Not Recommended, R - Redder, G - Greener, B - Bluer, \* - On tone)

## Coralene Black MD

### Product Performance:



(Dyeing at different dyebath temperature on polyester fabric at pH 4 adjusted with Levocol 4398)



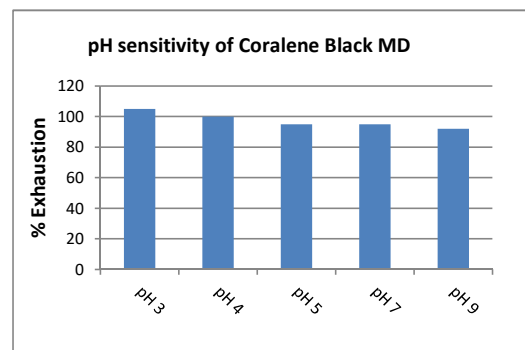
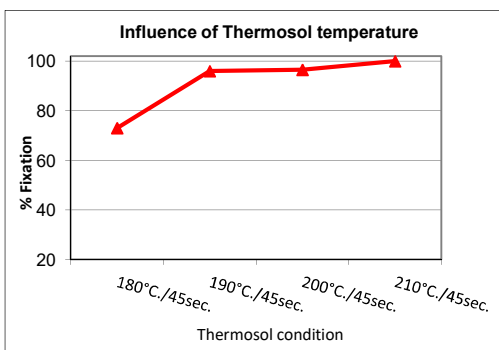
(Exhaust dyeing different depth at 130°C temperature for 45 min on polyester fabric at pH 4 adjusted with Levocol 4398)

### Thermosol Application: (Pad - Dry - Thermosol)

26 gpl Coralene Black MD on P/C fabric

### pH Sensitivity:

2.60% Coralene Black MD in exhaust dyeing



### Fastness Properties: (Tested on 80D/36F 100% PET Knit dyed by exhaust method)

- Light fastness (ISO 105 B02, up to grade 4)
- Light fastness (AATCC 16, Option 3, 20 AFU)
- Sublimation fastness 1/1 SD (ISO 105 P01)

| Shade change (Rating) |        |        |
|-----------------------|--------|--------|
| 1/12 SD               | 1/6 SD | 1/1 SD |
| 4                     | 4      | 3-4    |
| 3.5                   | 3.5    | 4.5    |

|                 |       |
|-----------------|-------|
| Temperature     | 180°C |
| C.O.S.          | 4     |
| Staining on PET | 3     |

## Coralene Black MD

**Fastness Properties:** ( Tested at 2.60% depth, on 80D/36F 100% PET Knit dyed by exhaust method and post set at 180°C for 30 Sec)

|  |          | Staining on |         |        |       |           |         |      |
|--|----------|-------------|---------|--------|-------|-----------|---------|------|
|  |          | C.O.S.      | Acetate | Cotton | Nylon | Polyester | Acrylic | Wool |
| ● Perspiration Light fastness (ISO 105 B07)        | Acid     | 4-5         |         |        |       |           |         |      |
| ● Perspiration Light fastness (ISO 105 B07)        | Alkaline | 4-5         |         |        |       |           |         |      |
| ● Wash fastness (ISO 105 C06, A2S, 40°C)           |          | 4           | 4       | 4-5    | 4     | 4         | 4-5     | 4-5  |
| ● Wash fastness (ISO 105 C06, C2S, 60°C)           |          | 4           | 3-4     | 4      | 3     | 4         | 4-5     | 4-5  |
| ● Wash fastness (ISO 105 C10 C, 60°C)              |          | 4           | 4-5     | 4-5    | 4-5   | 4-5       | 4-5     | 4-5  |
| ● Wash fastness (AATCC 61 Option 2A,49°C, )        |          | 4.5         | 4.0     | 4.5    | 4.0   | 4.5       | 5.0     | 4.5  |
| ● M&S C4A, 50°C                                    |          | 4           | 4-5     | 4-5    | 3     | 3-4       | 4-5     | 4-5  |
| ● Dry cleaning fastness ( ISO 105 D01)             |          | 4           | 4-5     | 4-5    | 4-5   | 4-5       | 4-5     | 4-5  |
| ● Water fastness ( ISO 105 E01)                    |          | 4-5         | 4-5     | 4-5    | 4-5   | 4-5       | 4-5     | 4-5  |
| ● Sea water fastness (ISO 105 E02)                 |          | 4-5         | 4       | 4-5    | 4     | 4-5       | 4-5     | 4-5  |
| ● Chlorinated water fastness (ISO 105 E03,20 ppm)  |          | 4           |         |        |       |           |         |      |
| ● Chlorinated water fastness (ISO 105 E03,50 ppm)  |          | 4           |         |        |       |           |         |      |
| ● Perspiration fastness (ISO 105 E04)              | Acid     | 4-5         | 4-5     | 4-5    | 4-5   | 4-5       | 4-5     | 4-5  |
| ● Perspiration fastness (ISO 105 E04)              | Alkaline | 4-5         | 4-5     | 4-5    | 4-5   | 4-5       | 4-5     | 4-5  |
| ● Burnt gas fumes fastness (ISO 105 G02, 3 cycles) |          | 4           |         |        |       |           |         |      |
| ● Hypochlorite bleach fastness (ISO 105 N01)       |          | 4           |         |        |       |           |         |      |
| ● Peroxide bleach fastness (ISO 105 N02)           |          | 4           |         | 4-5    |       | 4-5       |         |      |
| ● Mercerization fastness (ISO 105 X04)             |          | 4           |         | 4-5    |       |           |         |      |
| ● Crocking fastness (ISO 105 X12, Dry/Wet)         |          |             |         | 4/4    |       |           |         |      |
| ● Migration during storage (AATCC TM 163)          |          | 4.5         | 4.5     | 4.5    | 4.5   | 4.5       | 4.5     | 4.5  |

**Fastness Properties:** (Tested at 5.20% depth, on 100% micro PET Knit (0.5 dpf) dyed by exhaust method and post set at 180°C for 30 Sec)

|   |  | Staining on |         |         |       |           |         |      |
|---|--|-------------|---------|---------|-------|-----------|---------|------|
|   |  | C.O.S.      | Acetate | Cotton  | Nylon | Polyester | Acrylic | Wool |
| ● Light fastness (ISO 105 B02, up to grade 4) |  | 3-4         |         |         |       |           |         |      |
| ● Wash fastness (ISO 105 C06, A2S, 40°C)      |  | 4           | 3       | 4       | 3     | 3         | 4-5     | 4    |
| ● Wash fastness ((AATCC 61 Option 2A,49°C, )  |  | 4.0         | 3.0     | 4.0     | 2.0   | 2.5       | 4.0     | 3.5  |
| ● Water fastness ( ISO 105 E01)               |  | 4-5         | 4       | 4-5     | 4     | 4         | 4-5     | 4-5  |
| ● Crocking Fastness (ISO 105 X12, Dry/Wet)    |  |             |         | 3-4/3-4 |       |           |         |      |

**Fastness Properties:** (Tested at 9.5 g/l depth, on P/C (67/33) blend twill fabric by continuous dyeing method and post set at 180°C for 30 Sec)

|  |  | Staining on |         |        |       |           |         |      |
|--|--|-------------|---------|--------|-------|-----------|---------|------|
|  |  | C.O.S.      | Acetate | Cotton | Nylon | Polyester | Acrylic | Wool |
| ● Wash fastness (ISO 105 C06, A2S, 40°C)     |  | 4           | 4       | 4-5    | 4     | 4         | 4-5     | 4-5  |
| ● Wash fastness ((AATCC 61 Option 2A,49°C, ) |  | 4.0         | 2.5     | 4.5    | 2.0   | 3.0       | 4.5     | 3.5  |
| ● Water fastness ( ISO 105 E01)              |  | 4-5         | 4       | 4-5    | 4     | 4         | 4-5     | 4-5  |
| ● Crocking Fastness (ISO 105 X12, Dry/Wet)   |  |             |         | 4-5/4  |       |           |         |      |

**Note:**

**Disclaimer:** This information is provided in good faith, to the best of our knowledge and without liabilities.