

Coralene Royal Bue MD

A robust, high strength disperse dye with a royal blue hue. Suitable for producing deep blue and bright green shades.

Suitability / Application:

Substrate:

Fiber / Yarn	-	☉
Sewing threads	-	●
Piece dyeing	-	●
Micro fibers / fabric	-	☉
P/C Blends - Exhaust, 2 bath	-	●
P/C Blends - Continuous	-	●
P/Elastane Blends	-	☉
P/W Blends	-	●

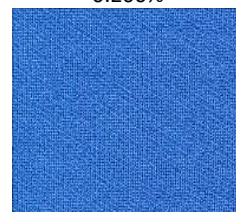
Process:

Exhaust dyeing:

Low temperature with carrier	-	○
HT, 110 ⁰ C with carrier	-	●
HT, 130 ⁰ C	-	●
HT, Alkaline dyeing with pH buffer	-	●
Continuous dyeing	-	●
Printing	-	☉
Discharge printing	-	☉

Exhaust Dyeing

0.200%



0.60% (1/1 SD)



1.20%



(Dyeing at 130⁰C for 30 min on polyester fabric at pH 4 adjusted with Levocol 4398)

General properties:

Energy class:	SE
C.T.Z.:	100 - 120 ⁰ C
Leveling at 130 ⁰ C:	Moderate
Migration:	Moderate
pH range in dyeing :	4.0-8.0
Dischargeability:(Zinc sulphonylate formaldehyde)	Good
Sensitivity to metal (Fe)	Moderate
Saturation value in HTHP exhaust dyeing (On 80D/36F polyester knit fabric)	1.50%
Staining of wool in fiber blend exhaust dyeing at 120 ⁰ C	Rinse 1
	R.C. 1-2 (On tone)

Continuous dyeing

6.0 g/l on P/C cloth



(67/33 Blend)

Shade change under artificial light:

D 65	Inc A	F 11 (TL 84)	F02 (CWF)	UL 35
Control	R	RR	RR	R

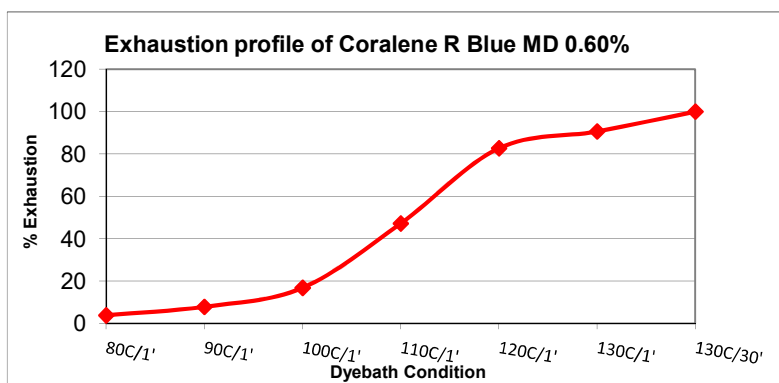
Cross staining on other components of blends in one bath dyeing:

Substrate	CA	PAN	PA	Cellulosic	Wool
Staining in dyebath	High	Moderate	High	Moderate	Moderate
Staining after R.C.	High*	Moderate*	High*	Low	Moderate*

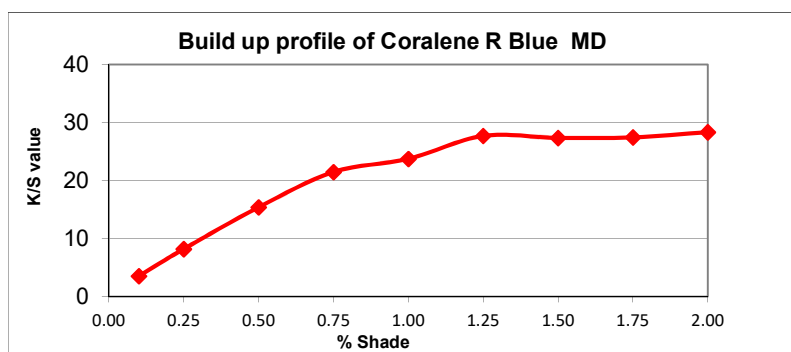
(Abbreviation: ● - Suitable, ○ - Not Suitable, ☉ - Not Recommended, R - Redder, G - Greener, B - Bluer, * - On tone)

Coralene Royal Bue MD

Product Performance:



(Dyeing at different dyebath temperature on polyester fabric at pH 4 adjusted with Levocol 4398)



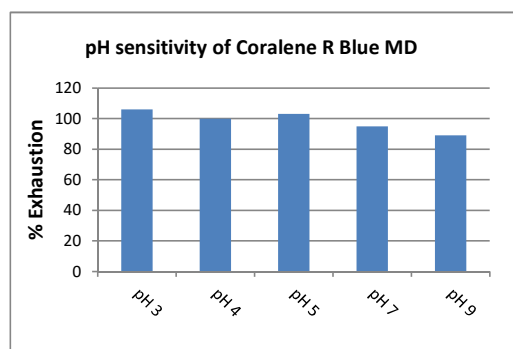
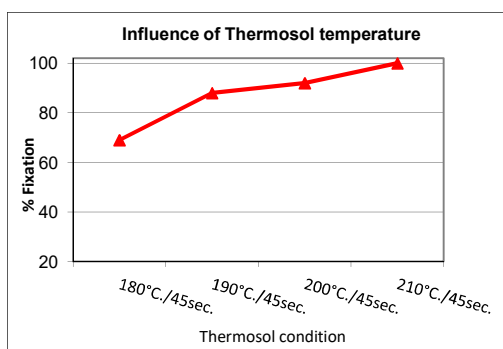
(Exhaust dyeing different depth at 130°C temperature for 45 min on polyester fabric at pH 4 adjusted with Levocol 4398)

Thermosol Application: (Pad - Dry - Thermosol)

6.0 gpl Coralene R Blue MD on P/C fabric

pH Sensitivity:

0.60% Coralene R Blue MD in exhaust dyeing



Fastness Properties: (Tested on 80D/36F 100% PET Knit dyed by exhaust method)

- Light fastness (ISO 105 B02, up to grade 4)
- Light fastness (AATCC 16, Option 3, 20 AFU)
- Sublimation fastness 1/1 SD (ISO 105 P01)

Shade change (Rating)		
1/12 SD	1/6 SD	1/1 SD
4	4	4
4.5	4.0	4.0

Temperature	180°C
C.O.S.	4
Staining on PET	3-4

Coralene Royal Bue MD

Fastness Properties: (Tested at 0.60% depth, on 80D/36F 100% PET Knit dyed by exhaust method and post set at 180°C for 30 Sec)

		Staining on						
		C.O.S.	Acetate	Cotton	Nylon	Polyester	Acrylic	Wool
● Perspiration Light fastness (ISO 105 B07)	Acid	4-5						
● Perspiration Light fastness (ISO 105 B07)	Alkaline	4-5						
● Wash fastness (ISO 105 C06, A2S, 40°C)		4	4-5	4-5	4-5	4-5	4-5	4-5
● Wash fastness (ISO 105 C06, C2S, 60°C)		4	4	4-5	4	4-5	4-5	4-5
● Wash fastness (ISO 105 C10 C, 60°C)		4	4-5	4-5	4-5	4-5	4-5	4-5
● Wash fastness (AATCC 61 Option 2A,49°C,)		4.5	4.5	5.0	4.0	4.5	5.0	4.5
● M&S C4A, 50°C		4	4-5	4-5	4	4-5	4-5	4-5
● Dry cleaning fastness (ISO 105 D01)		4	4-5	4-5	4-5	4-5	4-5	4-5
● Water fastness (ISO 105 E01)		4-5	4-5	4-5	4-5	4-5	4-5	4-5
● Sea water fastness (ISO 105 E02)		4-5	4-5	4-5	4-5	4-5	4-5	4-5
● Chlorinated water fastness (ISO 105 E03,20 ppm)		4-5						
● Chlorinated water fastness (ISO 105 E03,50 ppm)		4						
● Perspiration fastness (ISO 105 E04)	Acid	4-5	4-5	4-5	4-5	4-5	4-5	4-5
● Perspiration fastness (ISO 105 E04)	Alkaline	4-5	4-5	4-5	4-5	4-5	4-5	4-5
● Burnt gas fumes fastness (ISO 105 G02, 3 cycles)		4						
● Hypochlorite bleach fastness (ISO 105 N01)		4						
● Peroxide bleach fastness (ISO 105 N02)		4		4-5		4-5		
● Mercerization fastness (ISO 105 X04)		4		4-5				
● Crocking fastness (ISO 105 X12, Dry/Wet)				4-5/4-5				
● Migration during storage (AATCC TM 163)		4.5	4.5	4.5	4.5	4.5	4.5	4.5

Fastness Properties: (Tested at 1.20% depth, on 100% micro PET Knit (0.5 dpf) dyed by exhaust method and post set at 180°C for 30 Sec)

		Staining on						
		C.O.S.	Acetate	Cotton	Nylon	Polyester	Acrylic	Wool
● Light fastness (ISO 105 B02, up to grade 4)		3-4						
● Wash fastness (ISO 105 C06, A2S, 40°C)		4	3-4	4	3-4	3-4	4-5	4
● Wash fastness ((AATCC 61 Option 2A,49°C,)		4.0	3.0	4.0	2.5	3.5	4.5	3.5
● Water fastness (ISO 105 E01)		4-5	4	4-5	4	4	4-5	4-5
● Crocking Fastness (ISO 105 X12, Dry/Wet)				4-5/4-5				

Fastness Properties: (Tested at 6.0 g/l depth, on P/C (67/33) blend twill fabric by continuous dyeing method and post set at 180°C for 30 Sec)

		Staining on						
		C.O.S.	Acetate	Cotton	Nylon	Polyester	Acrylic	Wool
● Wash fastness (ISO 105 C06, A2S, 40°C)		4	4-5	4-5	4-5	4-5	4-5	4-5
● Wash fastness ((AATCC 61 Option 2A,49°C,)		4.0	3.5	4.5	3.0	4.0	4.5	4.0
● Water fastness (ISO 105 E01)		4-5	4	4-5	4-5	4-5	4-5	4-5
● Crocking Fastness (ISO 105 X12, Dry/Wet)				4-5/4-5				

Note:

Disclaimer: This information is provided in good faith, to the best of our knowledge and without liabilities.