

Coralene Yellow MD

A robust, high strength disperse dye with a brilliant lemon yellow hue. Suitable for producing bright orange, red and green shades.

Suitability / Application:

Substrate:

Fiber / Yarn	-	○
Sewing threads	-	●
Piece dyeing	-	●
Micro fibers / fabric	-	○
P/C Blends - Exhaust, 2 bath	-	●
P/C Blends - Continuous	-	●
P/Elastane Blends	-	○
P/W Blends	-	●

Process:

Exhaust dyeing:

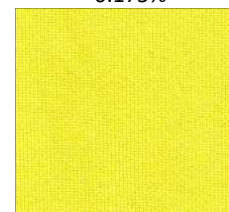
Low temperature with carrier	-	○
HT, 110 ⁰ C with carrier	-	●
HT, 130 ⁰ C	-	●
HT, Alkaline dyeing with pH buffer	-	●

Continuous dyeing

Printing	-	○
Discharge printing	-	○

Exhaust Dyeing

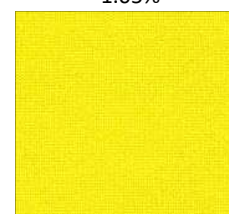
0.175%



0.525% (1/1 SD)

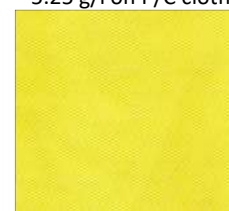


1.05%



Continuous dyeing

5.25 g/l on P/C cloth



(67/33 Blend)

(Dyeing at 130⁰C for 30 min on polyester fabric at pH 4 adjusted with Levocol 4398)

General properties:

Energy class:	SE
C.T.Z.:	110 - 130 ⁰ C
Leveling at 130 ⁰ C:	Moderate
Migration:	Good
pH range in dyeing :	4.0-6.0
Dischargeability:(Zinc sulfoxylate formaldehyde)	Good
Sensitivity to metal (Fe)	Low
Saturation value in HTHP exhaust dyeing (On 80D/36F polyester knit fabric)	1.25%
Staining of wool in fiber blend exhaust dyeing at 120 ⁰ C	Rinse 1
	R.C. 3-4 (On tone)

Shade change under artificial light:

D 65	Inc A	F 11 (TL 84)	F02 (CWF)	UL 35
Control	BB	GG	RR	GG

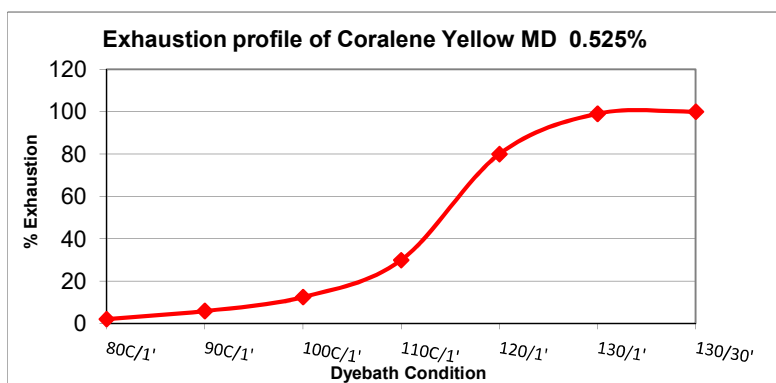
Cross staining on other components of blends in one bath dyeing:

Substrate	CA	PAN	PA	Cellulosic	Wool
Staining in dyebath	High	Moderate	High	Moderate	Moderate*
Staining after R.C.	High*	Moderate*	High*	Low	Moderate*

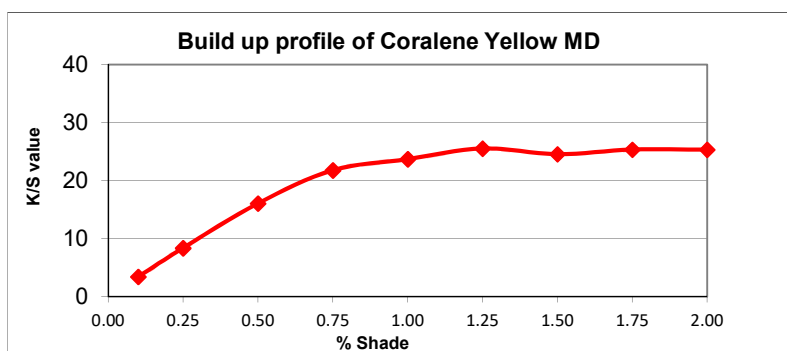
(Abbreviation: ● - Suitable, ○ - Not Suitable, ○ - Not Recommended, R - Redder, G - Greener, B - Bluer, * - On tone)

Coralene Yellow MD

Product Performance:



(Dyeing at different dyebath temperature on polyester fabric at pH 4 adjusted with Levocol 4398)



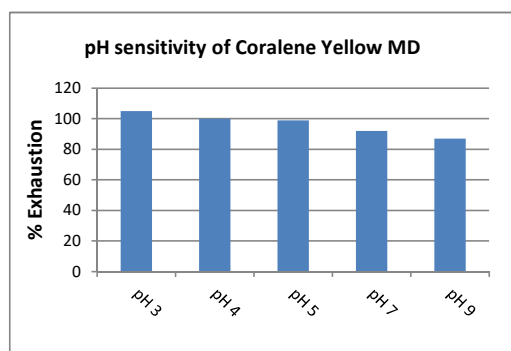
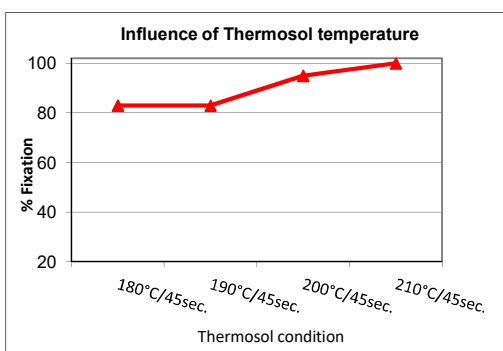
(Exhaust dyeing different depth at 130°C temperature for 45 min on polyester fabric at pH 4 adjusted with Levocol 4398)

Thermosol Application: (Pad - Dry - Thermosol)

5.3 gpl Coralene Yellow MD on P/C fabric

pH Sensitivity:

0.525% Coralene Yellow MD in exhaust dyeing



Fastness Properties: (Tested on 80D/36F 100% PET Knit dyed by exhaust method)

- Light fastness (ISO 105 B02, up to grade 4)
- Light fastness (AATCC 16, Option 3, 20 AFU)
- Sublimation fastness 1/1 SD (ISO 105 P01)

Shade change (Rating)		
1/12 SD	1/6 SD	1/1 SD
4	4	4
4.5	4.5	4.5

Temperature	180°C
C.O.S.	4
Staining on PET	3

Coralene Yellow MD

Fastness Properties: (Tested at 0.525% depth, on 80D/36F 100% PET Knit dyed by exhaust method and post set at 180°C for 30 Sec)

		Staining on						
		C.O.S.	Acetate	Cotton	Nylon	Polyester	Acrylic	Wool
● Perspiration Light fastness (ISO 105 B07)	Acid	4-5						
● Perspiration Light fastness (ISO 105 B07)	Alkaline	4-5						
● Wash fastness (ISO 105 C06, A2S, 40°C)		4	4	4	4	4-5	4-5	4-5
● Wash fastness (ISO 105 C06, C2S, 60°C)		4	3-4	4	3	4-5	4-5	4-5
● Wash fastness (ISO 105 C10 C, 60°C)		4.0	4-5	4-5	4-5	4-5	4-5	4-5
● Wash fastness (AATCC 61 Option 2A,49°C,)		4.5	5.0	5.0	4.5	5.0	5.0	5.0
● M&S C4A, 50°C		4	4	4	3	4-5	4-5	4-5
● Dry cleaning fastness (ISO 105 D01)		4	4-5	4-5	4-5	4-5	4-5	4-5
● Water fastness (ISO 105 E01)		4-5	4-5	4-5	4-5	4-5	4-5	4-5
● Sea water fastness (ISO 105 E02)		4-5	4-5	4-5	4	4-5	4-5	4-5
● Chlorinated water fastness (ISO 105 E03,20 ppm)		4						
● Chlorinated water fastness (ISO 105 E03,50 ppm)		4						
● Perspiration fastness (ISO 105 E04)	Acid	4-5	4-5	4-5	4-5	4-5	4-5	4-5
● Perspiration fastness (ISO 105 E04)	Alkaline	4-5	4-5	4-5	4-5	4-5	4-5	4-5
● Burnt gas fumes fastness (ISO 105 G02, 3 cycles)		4-5						
● Hypochlorite bleach fastness (ISO 105 N01)		4						
● Peroxide bleach fastness (ISO 105 N02)		4		4-5		4-5		
● Mercerization fastness (ISO 105 X04)		4		4-5				
● Crocking fastness (ISO 105 X12, Dry/Wet)				4-5/4				
● Migration during storage (AATCC TM 163)		4.5	4.5	4.5	4.5	4.5	4.5	4.5

Fastness Properties: (Tested at 1.05% depth, on 100% micro PET Knit (0.5 dpf) dyed by exhaust method and post set at 180°C for 30 Sec)

		Staining on						
		C.O.S.	Acetate	Cotton	Nylon	Polyester	Acrylic	Wool
● Light fastness (ISO 105 B02, up to grade 4)		4						
● Wash fastness (ISO 105 C06, A2S, 40°C)		4	3-4	4	3-4	4	4-5	4
● Wash fastness ((AATCC 61 Option 2A,49°C,)		4.0	3.0	3.5	3.0	4.5	4.5	4.0
● Water fastness (ISO 105 E01)		4-5	3-4	4	3-4	4	4-5	4-5
● Crocking Fastness (ISO 105 X12, Dry/Wet)				4-5/4-5				

Fastness Properties: (Tested at 5.25 g/l depth, on P/C (67/33) blend twill fabric by continuous dyeing method and post set at 180°C for 30 Sec)

		Staining on						
		C.O.S.	Acetate	Cotton	Nylon	Polyester	Acrylic	Wool
● Wash fastness (ISO 105 C06, A2S, 40°C)		4	4-5	4-5	4-5	4-5	4-5	4-5
● Wash fastness ((AATCC 61 Option 2A,49°C,)		4.0	4.5	4.5	4.5	4.5	4.5	4.5
● Water fastness (ISO 105 E01)		4-5	4	4-5	4	4-5	4-5	4-5
● Crocking Fastness (ISO 105 X12, Dry/Wet)				4-5/4				

Note: Recommended maximum dyeing concentration is 0.70% for ecological compliance.

Disclaimer: This information is provided in good faith, to the best of our knowledge and without liabilities.