

Levasol Blue CE

Short Profile

• Trichromatic Blue component together with LEVASOL Yellow CE and Red CE Basis for bottle greens in combination with Levasol Yellow CE or Yellow 4G. Basis for light navy shades.

Substrate Suitability :

Polyamide	M
Wool	S
Silk	S

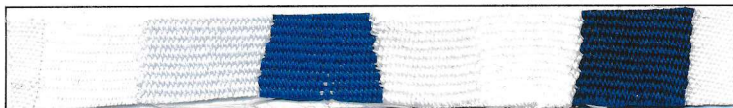
General properties:

Solubility at 90°C (g/l)	40
Dischargeability (Zn Sulfoxylate Formaldehyde)	1-2

Shade change under article light:

D65	Inc A	F11 (TL 84)
Control	Redder/Bluer	M.Redder/ M.Bluer

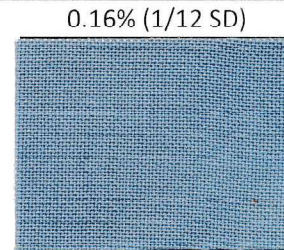
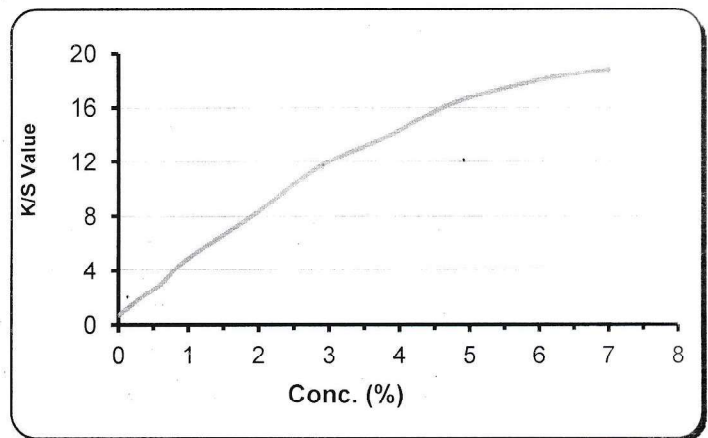
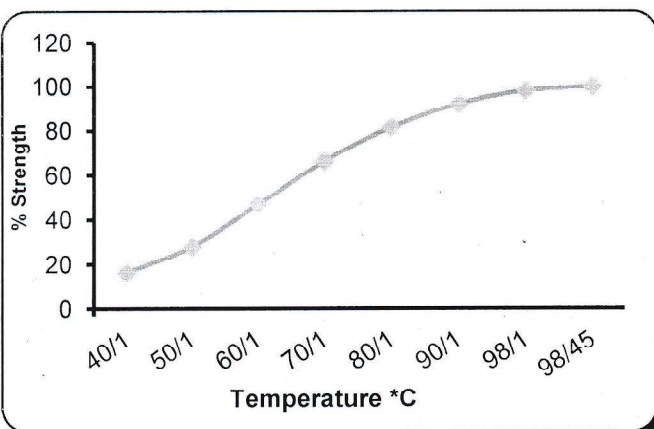
Cross staining on other components of blends in one bath dyeing :



ACETATE	COTTON	NYLON	POLYESTER	ACRYLIC	WOOL
---------	--------	-------	-----------	---------	------

Exhaustion Fixation :

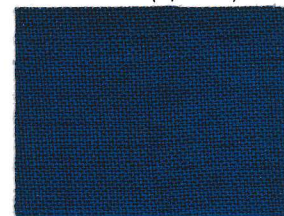
Saturation Curve:



0.16% (1/12 SD)



0.63% (1/3 SD)



1.90% (1/1 SD)

(Exhaust Dyeing on Wool fabric at 98°C for 45 min pH 4 with Formic Acid)

(This information is provided in good faith, to the best of our knowledge and without liability)

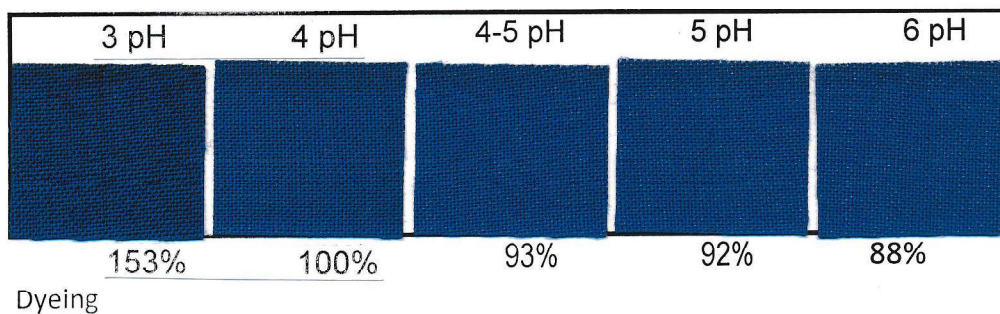
This information is provided in good faith, to the best of our knowledge and without any liability.

Fastness Properties Details

Levasol Blue CE	Wool Fabric			
	1/12	1/6	1/3	1/1
Light Fastness Shade depth				
Light fastness (ISO 105 B02)- Upto grade 6	4	4	4	5.6
Light fastness (AATCC 16E) 20 AFU	4	4	4	4.5
Light fastness (AATCC 16E) 40 AFU	3	3	3	3.5

Wet Fastness properties on 1/1 SD		SC	WO	PA	CO
Wash fastness (ISO 105 C10 - B (50°C))		4.5	4.5	4.5	4.5
Wash fastness (ISO 105 C10 - C (60°C))		4.5	4.5	4.5	4.5
Wash fastness (AATCC 61 Option 2A) (49°C)		4.5	4.5	4.5	4.5
Home laundry ISO 105 C06 B2S 50°C		4.5	4.5	4.5	4.5
Fastness to Hot water (ISO 105 E08) (70°C)		4	4.5	*	4.5
Fastness to Sea Water (ISO 105 E02)		4.5	4.5	4.5	4.5
Water Fastness Sever (ISO 105 E01)		4.5	4.5	4.5	4.5
Perspiration fastness (ISO 105 E04)	Acidic	4.5	4.5	4.5	5
	Alkaline	4.5	4.5	4.5	4.5
Fastness to alkaline milling, sever ISO 105- E012		4.5	4.5	4.5	4.5
Fastness to acid millingmild ISO 105- E014		4.5	4	4	4.5
Fastness to cross - dyeing acetic acid ISO 105 E07		4.5	3	*	4-5
Shampoo Fastness woolmarkTM233		4.5	4.5	4.5	
Fastness to Potting ISO 105 E09		4	3.4	*	4-5
Fastness to chlorination acid ISO 105 X03		2	4.5	4.5	4.5

Fastness to ISO 105 XE02 carbonizing (COS)		4.5	neutralized	4.5
Fastness to decatizing sever ISO 105 E10 (COS)		4.5		
Fastness to formaldehyde ISO 105 X09 (COS)		4.5		
Fastness to acid spotting ISO 105 E05	Acetic acid	4.5	4.5	4.5
	Sulphuric acid	4.5	4.5	4.5
Crocking Fastness (ISO 105 X12)		Dry	4	Wet 3.4



Remarks:-

(COS = Change of Shade , WO = Staining on Wool , PA = Staining on Polyamide , CO = Staining on Cotton)